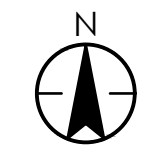
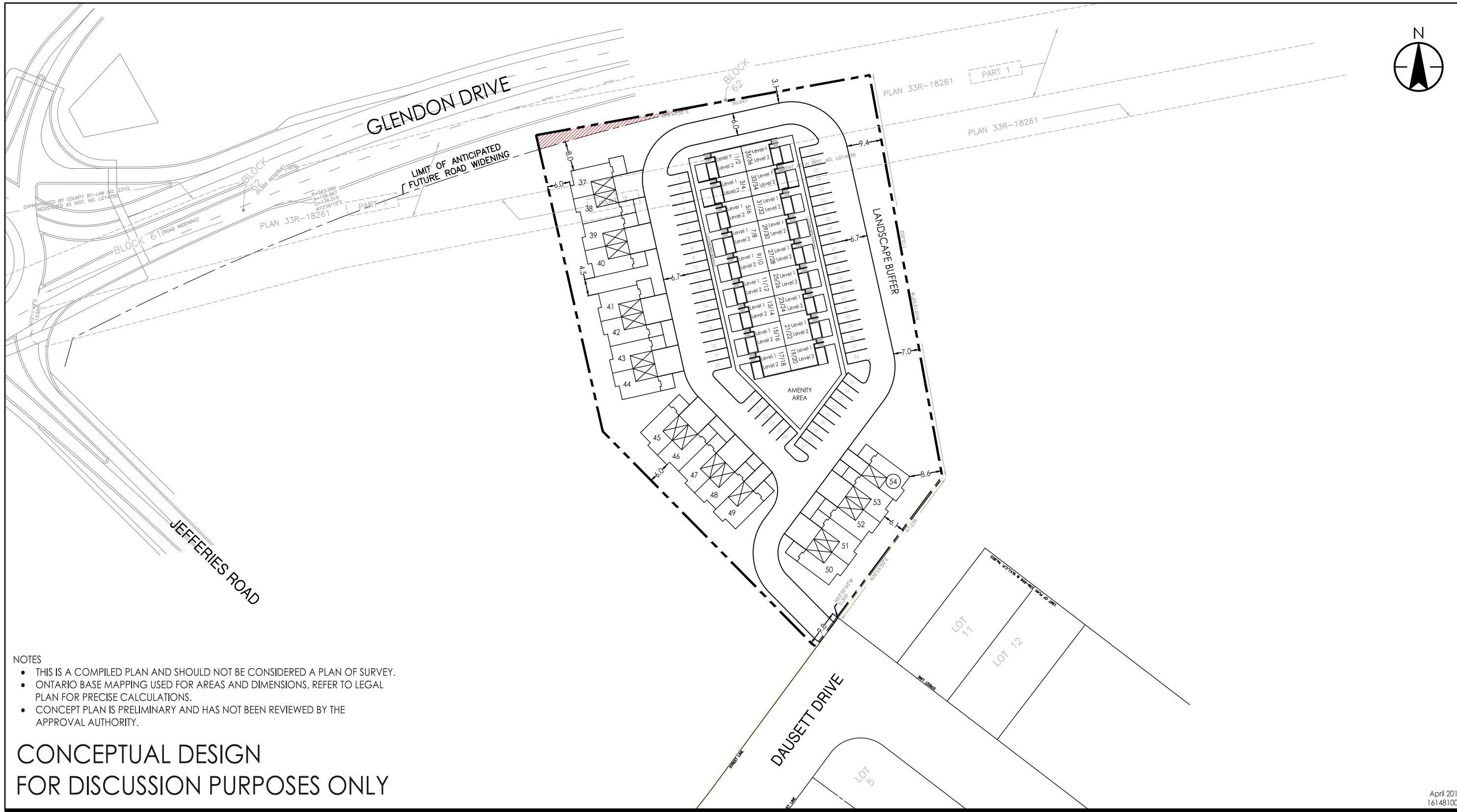


W:\161403102 - Land Acquisition - Administration\design\drawing\1614 - Business Development Sites\Potential Development Sites\Domus Kilworth\Kilworth_R-SP.dwg
2019-4-1 4:02 PM by: Turner, Rich



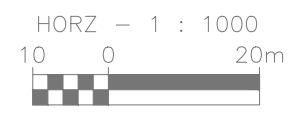
- NOTES
- THIS IS A COMPILED PLAN AND SHOULD NOT BE CONSIDERED A PLAN OF SURVEY.
 - ONTARIO BASE MAPPING USED FOR AREAS AND DIMENSIONS. REFER TO LEGAL PLAN FOR PRECISE CALCULATIONS.
 - CONCEPT PLAN IS PRELIMINARY AND HAS NOT BEEN REVIEWED BY THE APPROVAL AUTHORITY.

CONCEPTUAL DESIGN FOR DISCUSSION PURPOSES ONLY

April 2019
161481000



600-171 Queens Avenue
London ON N6A 5J7
Tel. 519-645-2007
www.stantec.com



Client/Project
DOMUS DEVELOPMENTS

Kilworth, ON Canada

Figure No.
1.0

Title
CONCEPTUAL SITE PLAN