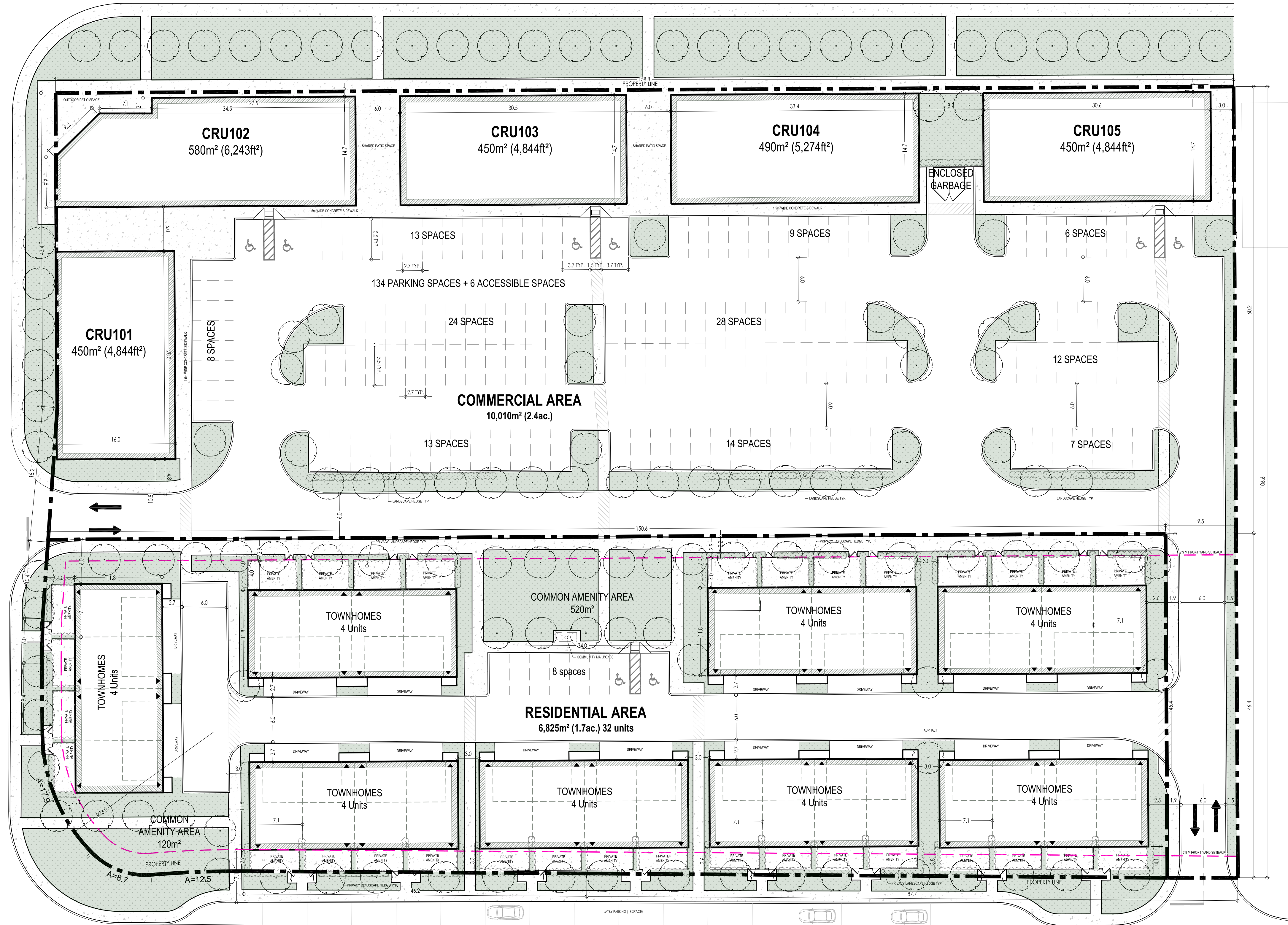


GLENDON DRIVE

CRESTVIEW DRIVE

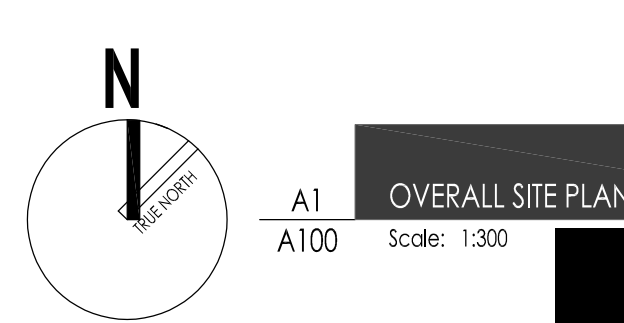


ZONING INFORMATION	
ZONING REGULATIONS	PROPOSED DEVELOPMENT
LOT AREA (M²)	TOTAL: 16,835 m²
RESIDENTIAL:	RESIDENTIAL: 6,825 m²
COMMERCIAL:	COMMERCIAL: 10,010 m²
BUILDING AREA (M²)	TOTAL: 5,079 m²
RESIDENTIAL:	RESIDENTIAL: 2,659 m²
COMMERCIAL:	COMMERCIAL: 2,420 m²
LOT FRONTAGE	
RESIDENTIAL:	75%
COMMERCIAL:	158 m
AMENITY AREA (M)	
RESIDENTIAL:	COMMON AMENITY AREA: 630 m²
BUILDING HEIGHT (M)	
RESIDENTIAL:	11.5 m
COMMERCIAL:	8.0 m
LOT COVERAGE (%)	
RESIDENTIAL:	39%
COMMERCIAL:	24%
DENSITY - UNITS PER H.A.	
RESIDENTIAL:	0,7217 ha. 32 UNITS = 23 UPH
PARKING REQUIRED	
RESIDENTIAL	32 GARAGE, 6 VISITOR + 2 ACCESSIBLE SPACES
COMMERCIAL	134 SPACES + 6 ACCESSIBLE
NOTES:	
1. NUMBER OF DRIVE-THROUGH = 1	

SITE PLAN LEGEND	
	NEW BUILDING
	PROPOSED BUILDING BY OTHERS
	DENOTES EXTENT OF LANDSCAPED AREA (SODDED)
	DENOTES EXTENT OF C.I.P. CONC. SIDEWALK
	PROPERTY LINE
	ZONING SETBACK
	FIRE ACCESS ROUTE INDICATOR
	UNIT ENTRANCE INDICATOR

SITE PLAN NOTES

.01 UNLESS OTHERWISE NOTED, ALL SITE PLAN DIMENSIONS ARE MEASURED IN METERS.



OXFORD & CLEMENS DEVELOPMENT
NOVEMBER 12, 2021

