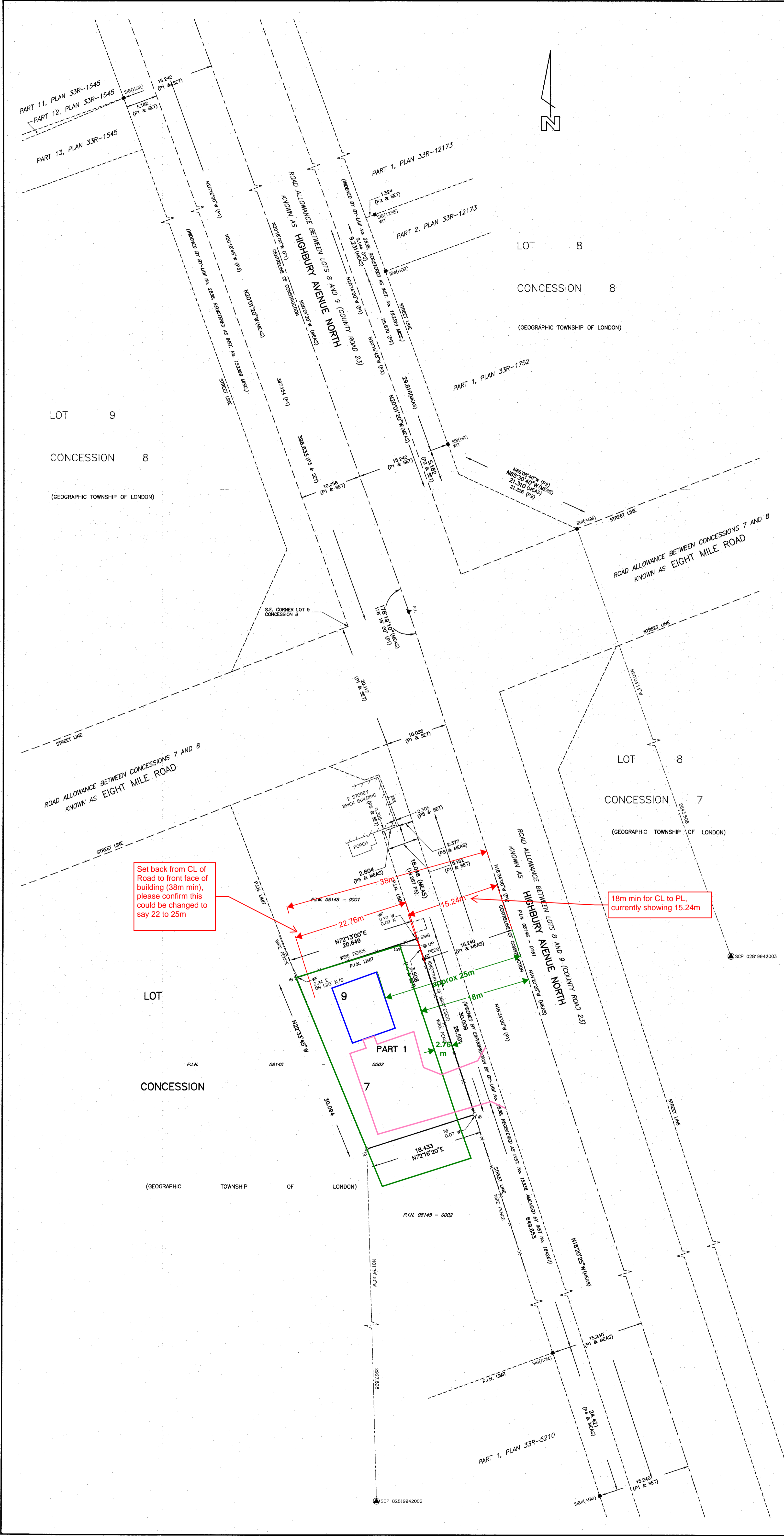


| | | | | |
|--|-----------|------------|---|--|
| I REQUIRE THIS PLAN TO BE DEPOSITED UNDER THE LAND TITLES ACT. | | | PLAN 33R-- | |
| DATE: NOVEMBER 30, 2021 | | | RECEIVED AND DEPOSITED | |
| SIGNED: <i>David Bianchi</i> | | | DATE: _____ | |
| DAVID BIANCHI, O.L.S. MTE OLS LTD. | | | REPRESENTATIVE FOR THE LAND REGISTRAR FOR THE LAND TITLES DIVISION OF MIDDLESEX (N33) | |
| PART | LOT | CONCESSION | P.I.N. | |
| 1 | Part of 9 | 7 | Part of 08145 - 0002 | |

PLAN OF SURVEY
of part of
LOT 9
CONCESSION 7
(GEOGRAPHIC TOWNSHIP OF LONDON)
in the
MUNICIPALITY OF MIDDLESEX CENTRE
COUNTY OF MIDDLESEX
MTE | OLS LTD., ONTARIO LAND SURVEYORS
Scale 1 : 300
5m 0 5 10 20m
METRIC: DISTANCES SHOWN ON THIS PLAN ARE IN METRES AND CAN BE CONVERTED TO FEET BY DIVIDING BY 0.3048



Set back from CL of Road to front face of building (38m min), please confirm this could be changed to say 22 to 25m

18m min for CL to PL, currently showing 15.24m

NOTES

- SIB DENOTES STANDARD IRON BAR.
- IB# IRON BAR.
- IB# ROUND IRON BAR.
- CC CUT CROSS.
- WT WITNESS.
- (SU) SOURCE UNKNOWN
- WT WITNESS.
- SSIB SHORT STANDARD IRON BAR
- (MTE) MTE OLS LTD.
- MONUMENT FOUND.
- MONUMENT SET.
- P1 COUNTY OF MIDDLESEX LAND PLAN (EXPROPRIATION BY-LAW No. 2838) FILE: 8/23/VI/L
- P2 PLAN 33R-12173
- P3 PLAN 33R-1545
- P4 PLAN 33R-5210
- P5 COUNTY OF MIDDLESEX LAND PLAN (CONVEYANCE - PARCELS A & B) FILE: 8/23/VI/L
- WF WIRE FENCE
- UP UTILITY POLE
- GW GUY WIRE
- PEDB PEDESTAL (BELL)
- P.I. POINT OF INTERSECTION

BEARINGS ARE UTM GRID DERIVED FROM SPECIFIED CONTROL POINTS 02819942002 AND 02819942003 UTM ZONE 17, NAD83 (CSRS-2010.0)

DISTANCES SHOWN ON THIS PLAN ARE GROUND LEVEL DISTANCES AND CAN BE CONVERTED TO GRID DISTANCES BY MULTIPLYING BY A COMBINED SCALE FACTOR OF 0.999569425

SPECIFIED CONTROL POINTS (SCP's) : UTM ZONE 17, NAD83 (CSRS-2010.0)

| POINT ID | NORTHING | EASTING |
|-----------------|-------------|------------|
| SCP 02819942002 | 4786582.554 | 480132.593 |
| SCP 02819942003 | 4786638.968 | 481060.332 |

COORDINATES CANNOT, IN THEMSELVES, BE USED TO RE-ESTABLISH CORNERS OR BOUNDARIES SHOWN ON THIS PLAN.

SURVEYOR'S CERTIFICATE

I CERTIFY THAT:
(1) THIS SURVEY AND PLAN ARE CORRECT AND IN ACCORDANCE WITH THE SURVEYS ACT, THE SURVEYORS ACT AND THE LAND TITLES ACT AND THE REGULATIONS MADE UNDER THEM.
(2) THE SURVEY WAS COMPLETED ON THE 11th DAY OF NOVEMBER, 2021

NOVEMBER 30, 2021
LONDON, ONTARIO.

David Bianchi
DAVID BIANCHI
ONTARIO LAND SURVEYOR

MTE MTE ONTARIO LAND SURVEYORS LTD.
123 ST. GEORGE STREET
LONDON, ONTARIO, N6A 3A1
TEL: 519-204-6510

| | | |
|--------------|----------------|-------------------------|
| Drawn By: DB | Checked By: DB | MTE File No.: 50021-100 |
| Drawn By: rc | Date: 21/11/30 | File No.: |