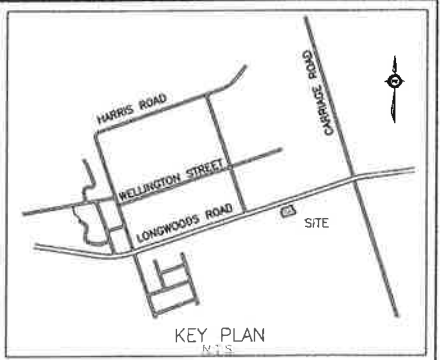
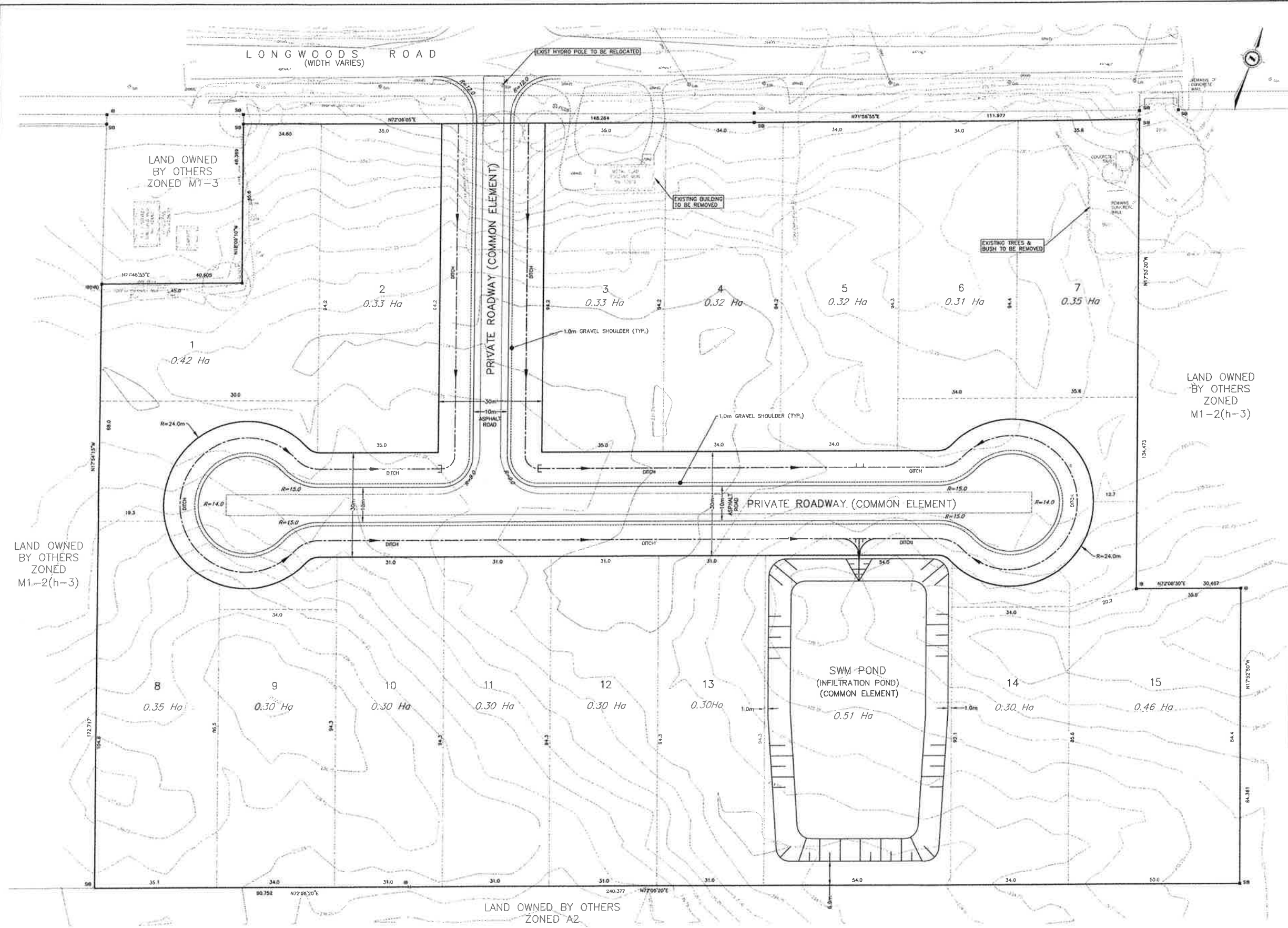


PLAN: 15013 \ 200 \ PRELIMINARY LOT: 15013 \ 200 \ PLANS: 15013 \ 200 \ REVISION



**DRAFT PLAN OF
VACANT LAND CONDOMINIUM**
PART OF
LOT 6, CONCESSION 1
IN THE
MUNICIPALITY OF MIDDLESEX CENTRE
(GEOGRAPHIC TOWNSHIP OF DELAWARE)
COUNTY OF MIDDLESEX

OWNER'S CERTIFICATE
I HEREBY AUTHORIZE THE SUBMISSION OF THIS PLAN IN DRAFT FORM.

Guy Riopelle DATE
GUY RIOPELLE DATE
10919 LONGWOODS ROAD INC. I HAVE AUTHORITY TO BID THE COROPATION

SURVEYOR'S CERTIFICATE
I CERTIFY THAT THE BOUNDARIES OF THE LANDS TO BE SUBDIVIDED, AS SHOWN ON THIS PLAN, AND THEIR RELATIONSHIP TO THE ADJACENT LANDS ARE ACCURATELY AND CORRECTLY SHOWN.

P.R. Levac DATE
P.R. LEVAC DATE
ONTARIO LAND SURVEYOR

REQUIREMENTS OF SECTION 51(17) of the PLANNING ACT

(A) SEE PLAN	(F) SEE PLAN	(I) SAND, SILT & CLAY
(B) SEE PLAN	(F.1) N/A	(J) SEE PLAN
(C) SEE PLAN	(G) SEE PLAN	(K) MUNICIPAL WATER SERVICE ONLY
(D) SEE PLAN	(H) MUNICIPAL WATER	(L) SEE PLAN

SCHEDULE OF LAND USE (IN Ha)

LIGHT INDUSTRIAL	LOTS 1-15	4.96
ROAD CORRIDOR	COMMON ELEMENT	1.17
SWM POND	COMMON ELEMENT	0.51
TOTAL		6.64 Ha

6.0m WIDE FIRE ROUTE
C\L RADIUS = 12m

FIRE ROUTE SIGNS SHALL BE PLACED ON BOTH SIDES OF ROADWAY WITH 30m SPACINGS

EXISTING ZONING OF LANDS = M1-2(h-3)

EXISTING SERVICES	DRAWING #, SOURCE	CONSTRUCTION DATE	CONSTRUCTED SERVICES	COMPLETION DATE	DETAILS	No.	REVISIONS	DATE	CONSULTANT
					DESIGN	NAM			
					CHECKED	NAM			
					APPROVED	NAM			
					DATE	JAN/20			



CONSULTANT OR EMPLOYER	ENGINEER'S STAMP	SCALE	DATE
		SCALE = 1 : 500	

LOT 6, CONCESSION 1
MUNICIPALITY OF MIDDLESEX CENTRE

**DRAFT PLAN OF
VACANT LAND CONDOMINIUM**

PROJECT No. **45013-200**
SHEET No. **1**
PLAN FILE No.