

PLAN 33M-673

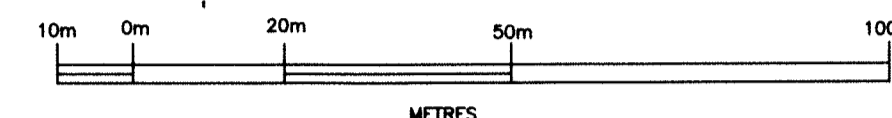
I CERTIFY THAT THIS PLAN IS REGISTERED IN THE LAND REGISTRY OFFICE FOR THE LAND TITLES DIVISION OF MIDDLESEX AT 11:00 O'CLOCK ON THE 23rd DAY OF August 2014 AND ENTERED IN THE REGISTER FOR P.I.N. 096601-0245 AND THE REQUIRED CONSENTS ARE REGISTERED AS PLAN DOCUMENT N° ER447026

L. VAN BOMMEL

REPRESENTATIVE FOR THE LAND REGISTRAR

THIS PLAN COMPRISES PART OF P.I.N. 09660 - 0245 ALL OF LOTS 1 TO 28, ALL OF BLOCKS 29 TO 34, ALL OF CAVERHILL CRESCENT ARE SUBJECT TO EASEMENT AS IN INST. No. ER765167

PLAN OF SUBDIVISION of part of LOT 4, CONCESSION 2 (GEOGRAPHIC TOWNSHIP OF LOBO) in the MUNICIPALITY OF MIDDLESEX CENTRE COUNTY OF MIDDLESEX Scale 1 : 1000 DAVID BIANCHI, O.L.S.



METRIC: DISTANCES AND COORDINATES SHOWN ON THIS PLAN ARE IN METRES AND CAN BE CONVERTED TO FEET BY DIVIDING BY 0.3048

NOTES

- SIB DENOTES STANDARD IRON BAR. IB IRON BAR. IB# ROUND IRON BAR. CC CUT CROSS. WIT WITNESS. ISU SOURCE UNKNOWN. (HRI) HOLSTEAD & REDMOND LIMITED, O.L.S.'s. M MONUMENT FOUND. □ MONUMENT SET. P PLAN 33R-18031. P2 REGISTERED PLAN No. 33M-629. P3 REGISTERED PLAN No. 33M-572. M MEASURE. FP FENCE POST. WF WIRE FENCE. BF BOARD FENCE. CLF CHAIN LINK FENCE. S SPRUCE TREE. BF BOARD FENCE.

BEARINGS AND DISTANCES SHOWN ON THIS PLAN AGREE WITH THOSE SHOWN ON PLAN 33R-18517 UNLESS SHOWN OTHERWISE. ALL FOUND MONUMENTATION SHOWN ON THIS PLAN ARE HOLSTEAD & REDMOND, O.L.S. UNLESS NOTED OTHERWISE.

MONUMENTATION

THE CORNERS OF LOTS 1 TO 28 (BOTH INCLUSIVE) AND BLOCKS 29 TO 34 (BOTH INCLUSIVE) ARE MONUMENTED WITH IRON BARS 1.6cm. x 60cm. LONG UNLESS NOTED OTHERWISE.

OWNER'S CERTIFICATE

- THIS IS TO CERTIFY THAT: (1) LOTS 1 TO 28 (BOTH INCLUSIVE), THE RESERVES NAMELY BLOCKS 29, 30, 31 AND 34, BLOCKS 32 AND 33, THE STREET NAMELY CAVERHILL CRESCENT HAVE BEEN LAID OUT IN ACCORDANCE WITH MY INSTRUCTIONS. (2) THE STREET IS HEREBY DEDICATED TO THE CORPORATION OF THE MUNICIPALITY OF MIDDLESEX CENTRE AS PUBLIC HIGHWAY.

PEMIC KOMOKA DEVELOPMENT CORP.

DATED THIS 4 DAY OF June, 2014

Signature of Michael Howe, President. I HAVE THE AUTHORITY TO BIND THE CORPORATION

APPROVAL AUTHORITY CERTIFICATE

THIS FINAL PLAN OF SUBDIVISION IS APPROVED BY THE COUNTY OF MIDDLESEX UNDER SECTION 51(68) OF THE PLANNING ACT, R.S.O. 1990. ON THIS 26 DAY OF August, 2014.

Signature of David Bianchi, Director of Planning & Economic Development. COUNTY OF MIDDLESEX

SURVEYOR'S CERTIFICATE

I CERTIFY THAT: (1) THIS SURVEY AND PLAN ARE CORRECT AND IN ACCORDANCE WITH THE SURVEYS ACT, THE SURVEYORS ACT AND THE LAND TITLES ACT AND THE REGULATIONS MADE UNDER THEM. (2) THE SURVEY WAS COMPLETED ON THE 27th DAY OF MAY, 2014.

JUNE 3, 2014 LONDON, ONTARIO.

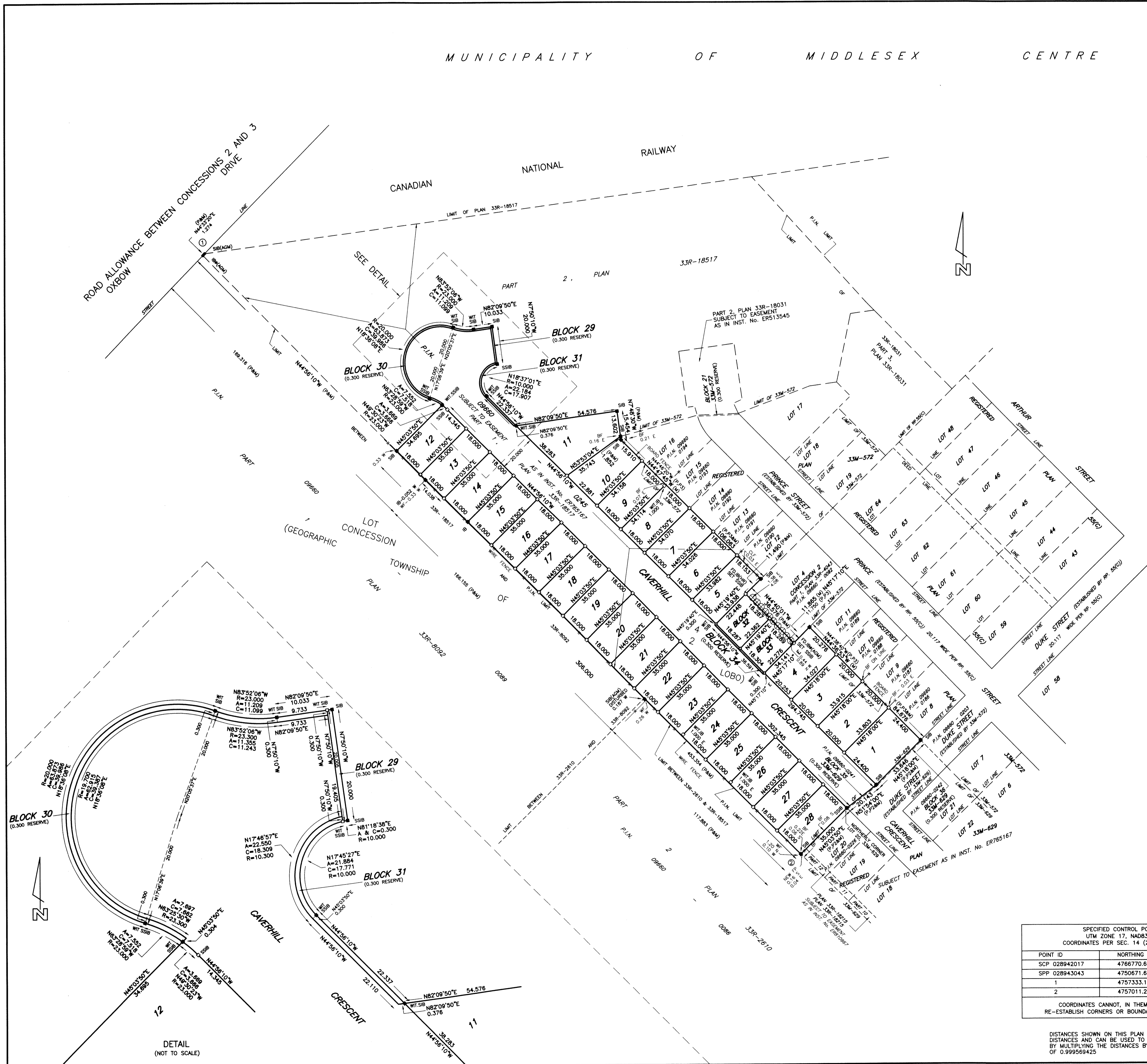
Signature of David Bianchi, Ontario Land Surveyor.

Table with 3 columns: POINT ID, NORTHING, EASTING. Rows include SCP 028942017, SPP 028943043, and coordinates for points 1 and 2.

DISTANCES SHOWN ON THIS PLAN ARE ADJUSTED GROUND LEVEL DISTANCES AND CAN BE USED TO COMPUTE GRID CO-ORDINATES BY MULTIPLYING THE DISTANCES BY A COMBINED SCALE FACTOR OF 0.999569425

Table with 3 columns: SURVEYED BY, CHECKED BY, FILE N°. Values: GEC, 14/06/03, 89-0245o

Holstead & Redmond Limited logo and contact information: 649 COLBORNE STREET, LONDON, ONTARIO, M6A 3Z2, phone 594-472-4550, toll free 1-800-265-4945



DETAIL (NOT TO SCALE)