

Appendix B- Temporary Speed Cushion Locations

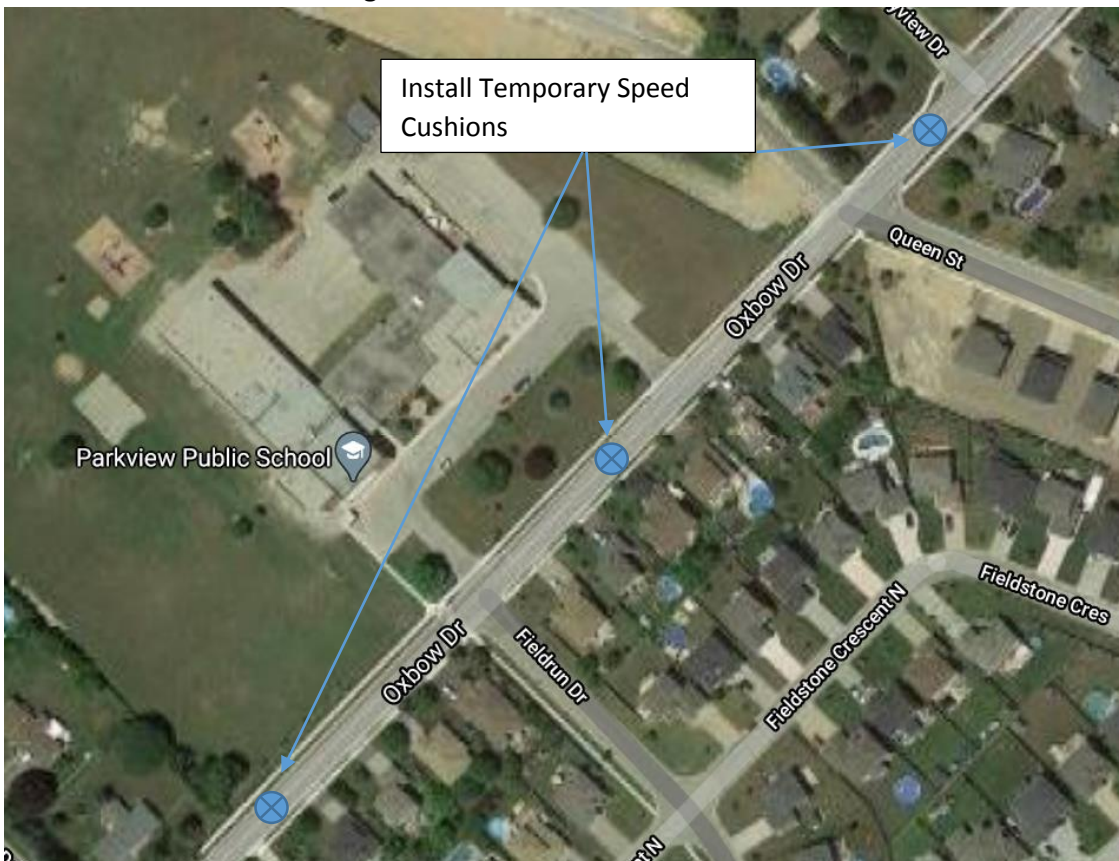
Jefferies Drive, Between Glendon Drive and Stephen Moore Dr Killworth



Jefferies Drive between Stephen Moore Drive and Westbrook Drive Killworth



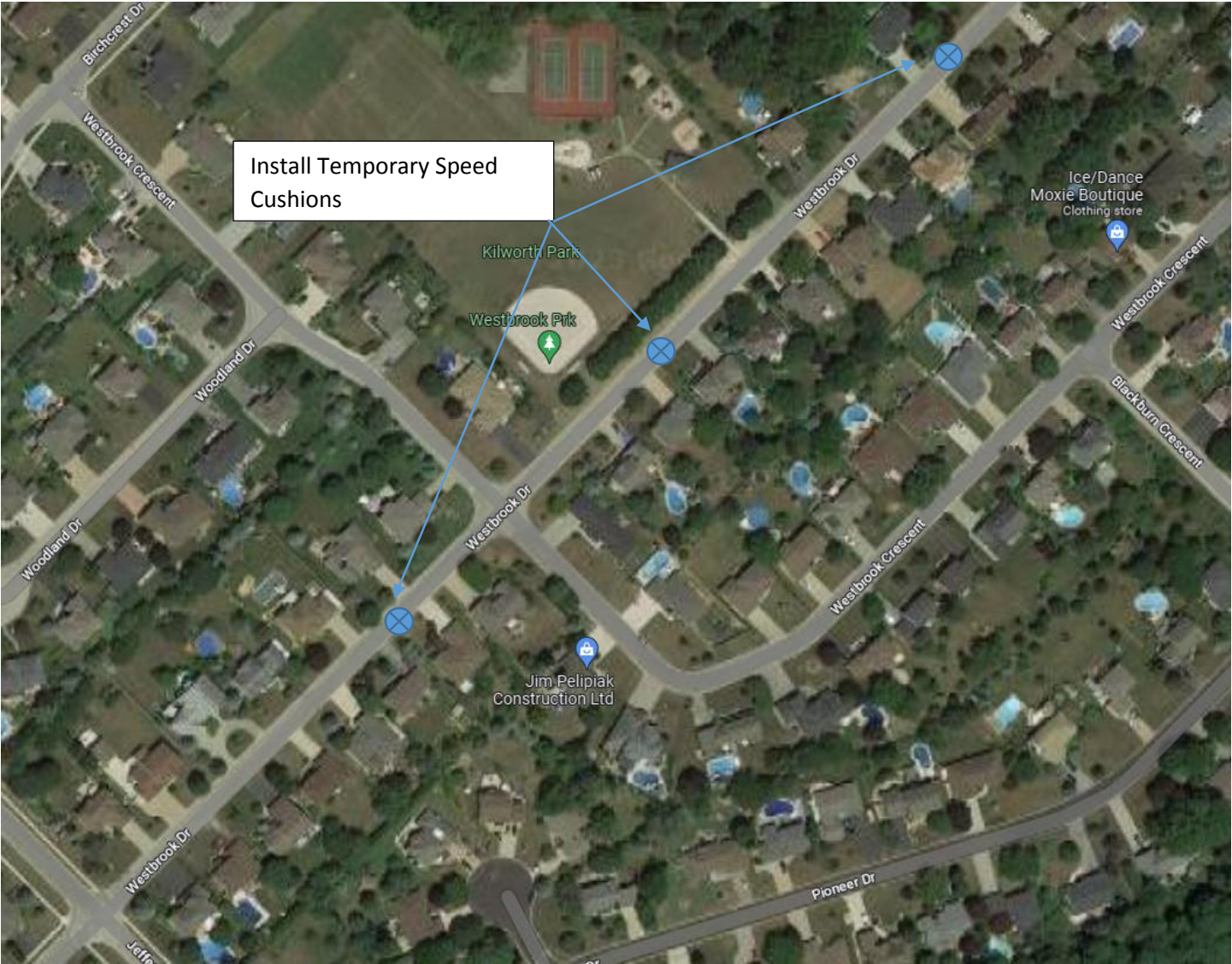
Oxbow Drive Komoka Fronting Parkview Public School



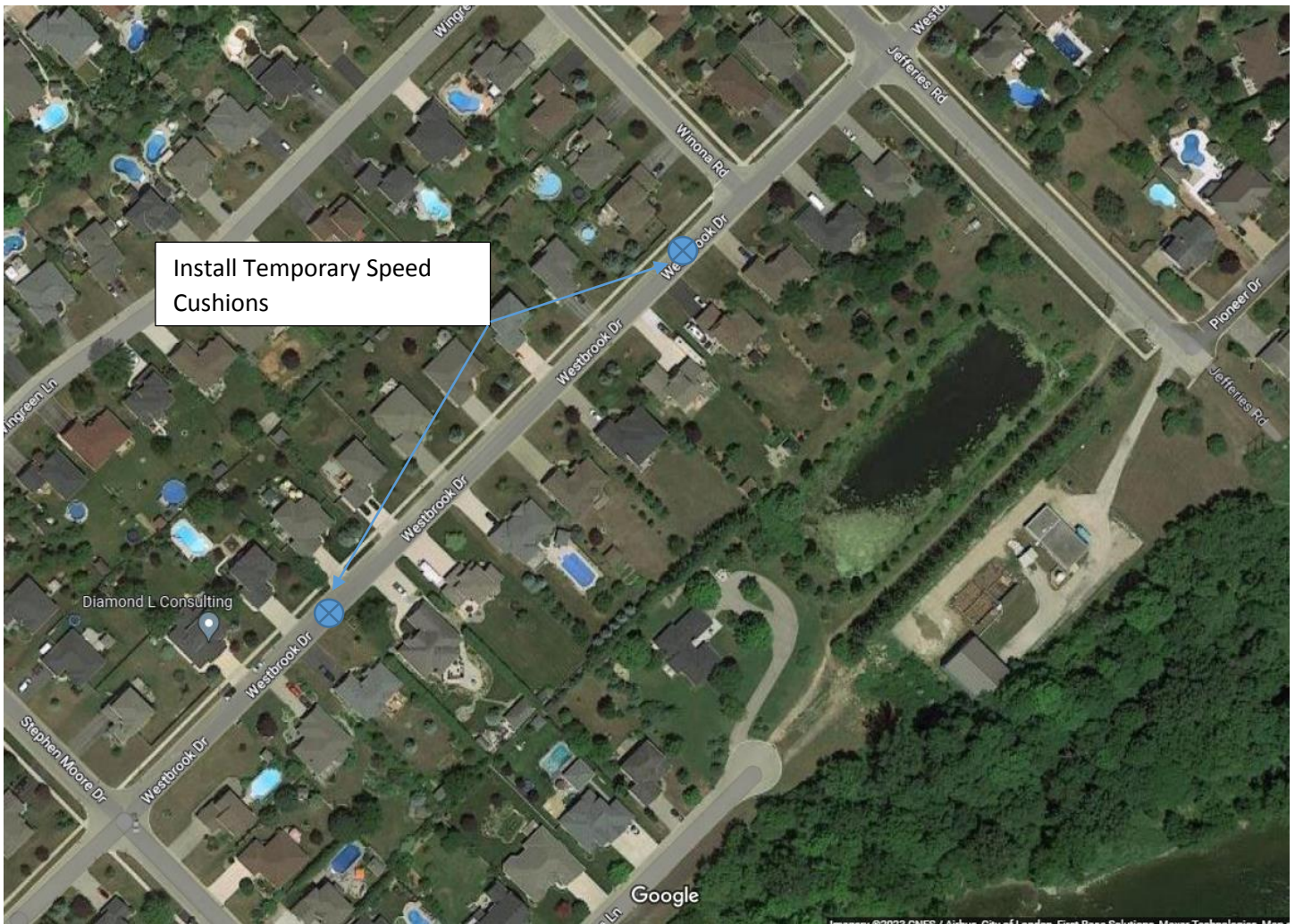
An aerial photograph of a residential area with a large, undeveloped brown field on the left. A road, Stephen Moore Dr, curves from the top right towards the bottom right. Two blue 'X' marks are placed on the road, with a callout box pointing to them that says 'Install Temporary Speed Cushions'. Other street names visible include Willard Crescent, Maxine Ct, and Daventry Way. The text 'Optimist Park - Kilworth' is overlaid on the brown field.

Install Temporary Speed Cushions

Westbrook Drive Fronting Westbrook Park



Westbrook Drive from Jeffries Road to Stephen Moore Drive



*All installations will be subject to in field conditions and may vary slightly from locations shown due to; maintenance hole lids, utilities, and driveway locations.