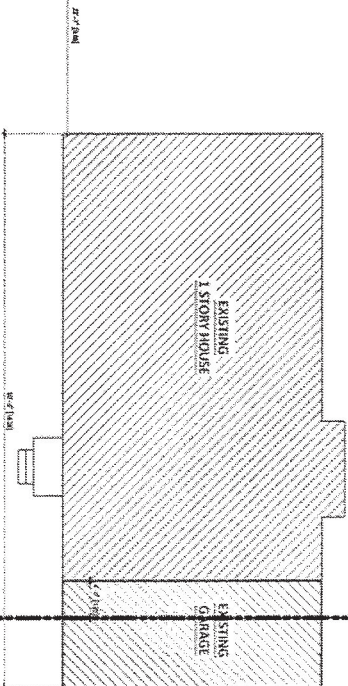


AREA: 13,500 Sq.Ft. = 1254.2 Sq.M.

AREA: 8,100 Sq.Ft. = 752.5 Sq.M.

# 120 Erie Ave, Komoka,



75'-0" [22.86]

120'-0" [36.58]

45'-0" [13.72]

Erie Ave.

SITE PLAN (EXISTING)