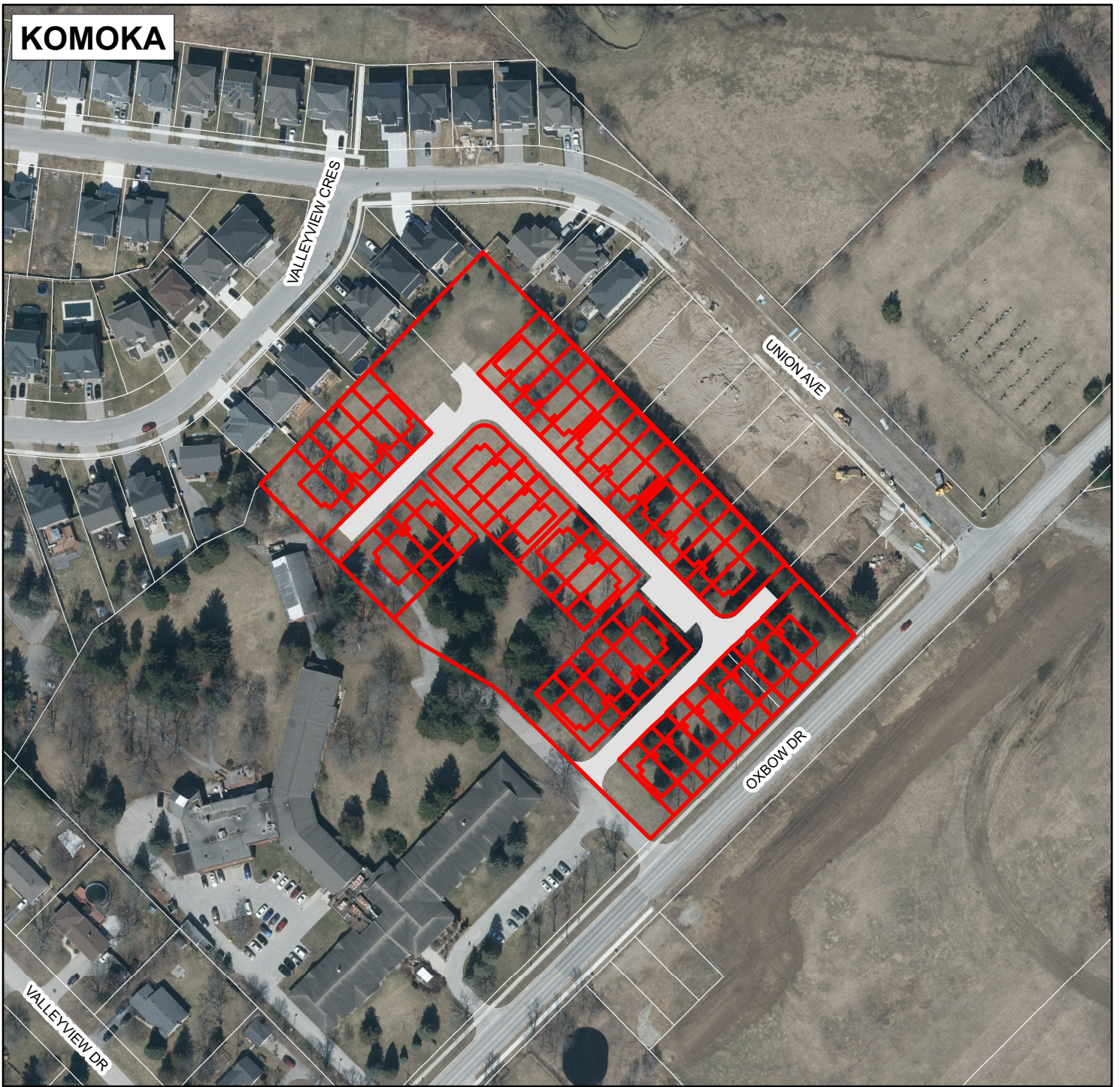


KOMOKA



LOCATION MAP

Description:
OXBOW DEVELOPMENTS
PROPOSED PLAN OF CONDOMINIUM
MUNICIPALITY OF MIDDLESEX CENTRE

File Number:
39T-MC-CDM2301

Prepared by: Planning Department,
The County of Middlesex, June 29, 2023



LEGEND

 SUBJECT LANDS

