

L A M O N T

(Named by The Corporation of The Township of Lobo By-Law No. 95-28, Registered as Inst. No. 949988)  
(Original Road Allowance Between The Concessions 5 and 6) (20,116 Wide) P.I.N. 09667-0076

D R I V E

Lot 10  
Concession 5

LANDS  
TO BE  
SEVERED

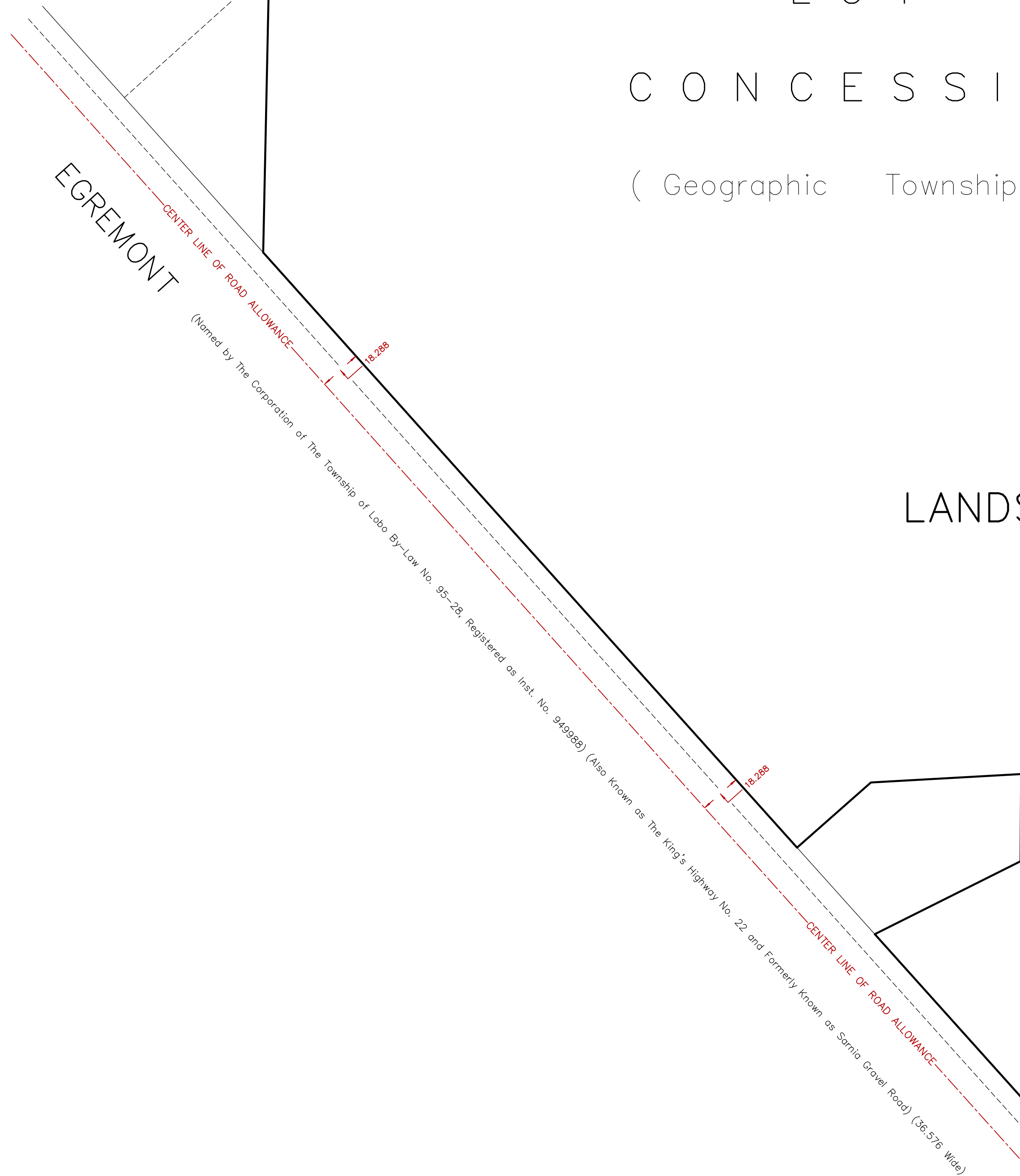
Part 1  
Plan 33R-3347  
Part 1  
Plan 33R-9010

SEVERANCE SKETCH  
OF PART OF  
**LOT 11, CONCESSION 5**  
(GEOGRAPHIC TOWNSHIP OF LOBO)  
IN THE  
**MUNICIPALITY OF  
MIDDLESEX CENTRE  
COUNTY OF MIDDLESEX**  
**NOT TO SCALE**  
2024  
ARCHIBALD, GRAY & McKAY LTD.  
ONTARIO LAND SURVEYORS

LOT 11  
CONCESSION 5  
( Geographic Township of Lobo )

Lot 12  
Concession 5

LANDS TO BE RETAINED



EGREMONT

DRIVE

CENTER LINE OF ROAD ALLOWANCE  
(Named by The Corporation of The Township of Lobo By-Law No. 95-28, Registered as Inst. No. 949988) (Also Known as The King's Highway No. 22 and Formerly Known as Samia Gravel Road) (36.576 Wide)

Part 1  
Plan 33R-14927

Part 1  
Plan 33R-567

Part 2  
Plan 33R-14927

**AGM** ARCHIBALD, GRAY & McKAY LTD.  
3514 WHITE OAK ROAD, LONDON, ON, N6E 2Z9  
PHONE: 519-685-5300 FAX: 519-685-5303  
EMAIL: info@agm.on.ca WEB: www.agm.on.ca  
PLAN • SURVEY • ENGINEER