

CONCEPT SKETCH

OF PART OF
LOT 8

CONCESSION 8

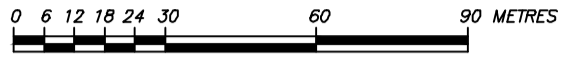
(GEOGRAPHIC TOWNSHIP OF LONDON)

NOW IN THE

MUNICIPALITY OF MIDDLESEX CENTRE

COUNTY OF MIDDLESEX

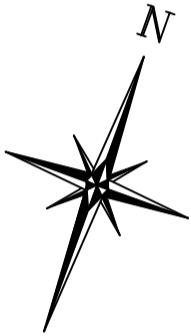
SCALE 1:1500



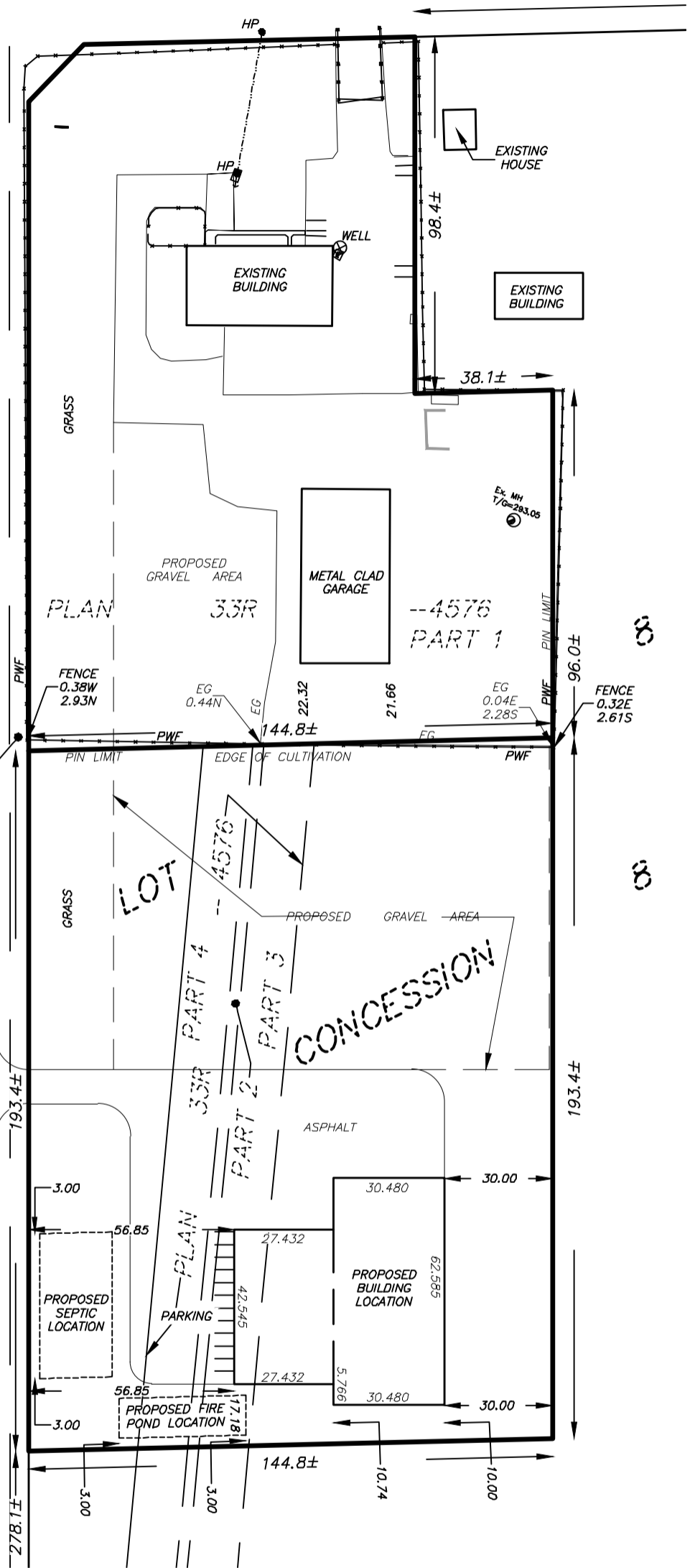
MTE OLS LTD.
ONTARIO LAND SURVEYORS

METRIC:

DISTANCES SHOWN ON THIS PLAN ARE IN METRES AND CAN BE CONVERTED TO FEET BY DIVIDING BY 0.3048.



HIGHBURY AVENUE
 (KNOWN AS COUNTY ROAD No. 23)
 (ROAD ALLOWANCE BETWEEN LOTS 8 AND 9)
 ROAD WIDENED BY BY-LAW No. 2838



CAUTION:

THIS IS NOT A PLAN OF SURVEY AND SHALL NOT BE USED EXCEPT FOR THE PURPOSES INDICATED IN THE TITLE BLOCK.

THIS SKETCH IS PREPARED FOR STRATFORD FARM EQUIPMENT LTD.
DATE : JULY 5, 2024

© COPYRIGHT 2024, MTE OLS LTD.



MTE

MTE ONTARIO LAND SURVEYORS LTD.
365 HOME STREET
STRATFORD, ONTARIO, N5A 2A5
TEL: 519-271-7952

Cad File: P:\55185\100\55185-100-SK1.DWG

COGO : 55185-100-UTMGROUND.ASC

Drawn By : C. JANSSEN

Checked By : D. REAUME

File No : 55185-100-SK1 (S)