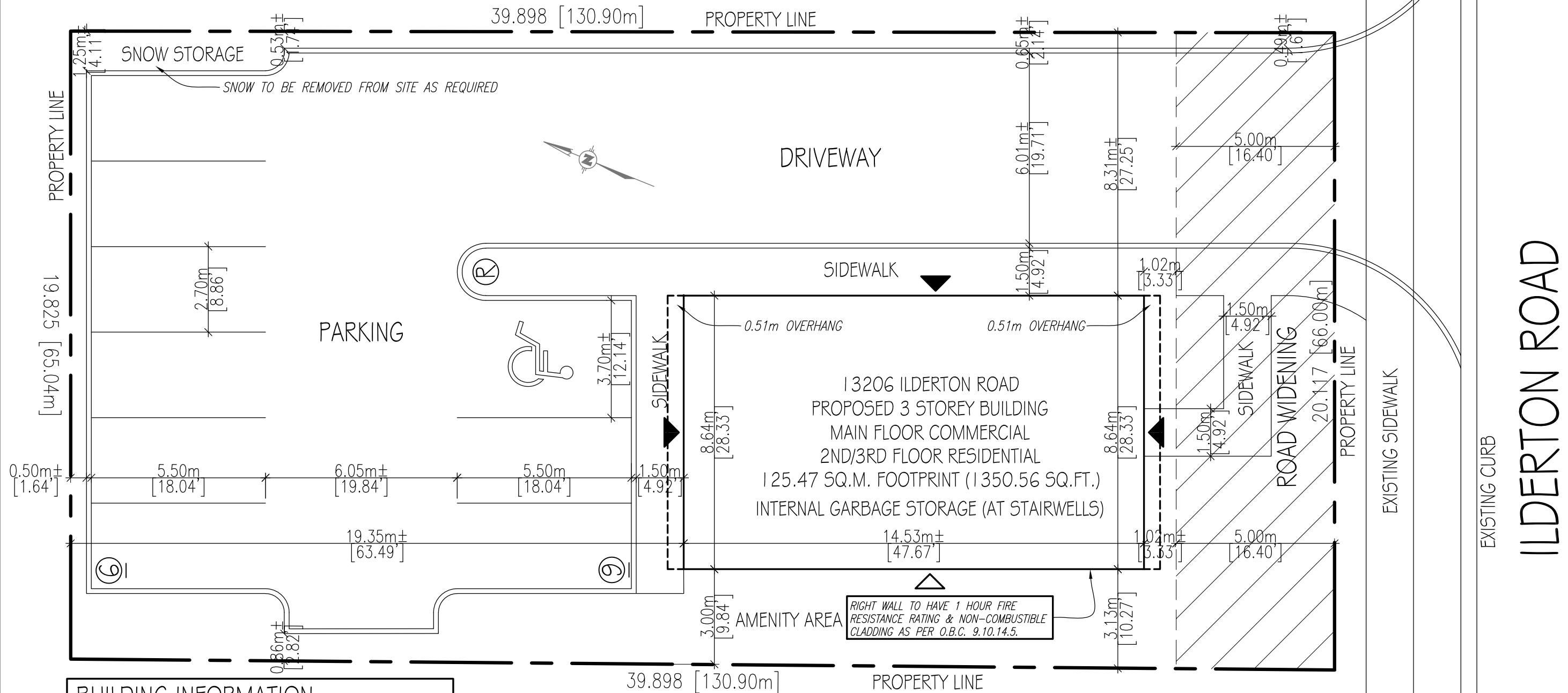


Note: Site Plan is subject to change



BUILDING INFORMATION	
3 STOREY MIXED USE BUILDING	
COMMERCIAL PORTION:	1 STOREY (MAIN FLOOR) AREA = 125.47 SQ.M. (1350.56 SQ.FT.) PARKING ALLOCATION = 4 SPACES
RESIDENTIAL PORTION:	2 STOREYS (2ND/3RD FLOOR - 4 APARTMENTS) AREA / FLOOR = 134.24 SQ.M. (1445 SQ.FT.) AREA (TOTAL) = 268.48 SQ.M. (2890 SQ.FT.) PARKING ALLOCATION = 5 SPACES
1 - 3.7m X 2.7m BARRIER FREE PARKING SPACE REQUIRED	

REVISIONS		
10/24/25	FLIP SITE PLAN	D.B.
04/28/25	ISSUED FOR REVIEW	D.B.
01/23/25	ISSUED FOR REVIEW	D.B.
11/07/24	ISSUED FOR REVIEW	D.B.

Do not scale drawings. Work to dimensions shown. The Contractor and all sub-trades must check their dimensions and details prior to start of their work. Report any errors and omissions to ENG PLUS LTD. prior to commencement of construction.

Name:	13206 ILBERTON ROAD	
Drawn:	Designed	Lot/Location:
Total Sq. Ft.	Scale:	Date:
Job File No.	Drawing:	
24.097	SITE PLAN	

**ENG PLUS**  
Engineers  
Landscape Architects  
and Building Designers  
tel. (519) 438-6994  
fax. (519) 438-7052

FILE NUMBER	Sheet:
	SITE