

# Amber-Lee Lighting

## Lighting level study

Amber-Lee Lighting Sales, 95 Shavian Blvd. London, Ontario, N6G 2P4 (519) 860-0505  
sales@Amber-LeeLighting.com www.amber-leelighting.com

Project name : Elmhurst - Street Lighting - Kilworth

Date: 7/8/2021

Prepared for: David Metcalfe

AGi32® Version 19.15.2

Filename: Elmhurst - Street Lighting - Kilworth.AGI

Total Time (Hrs.): 1.03

By : Anne Côté

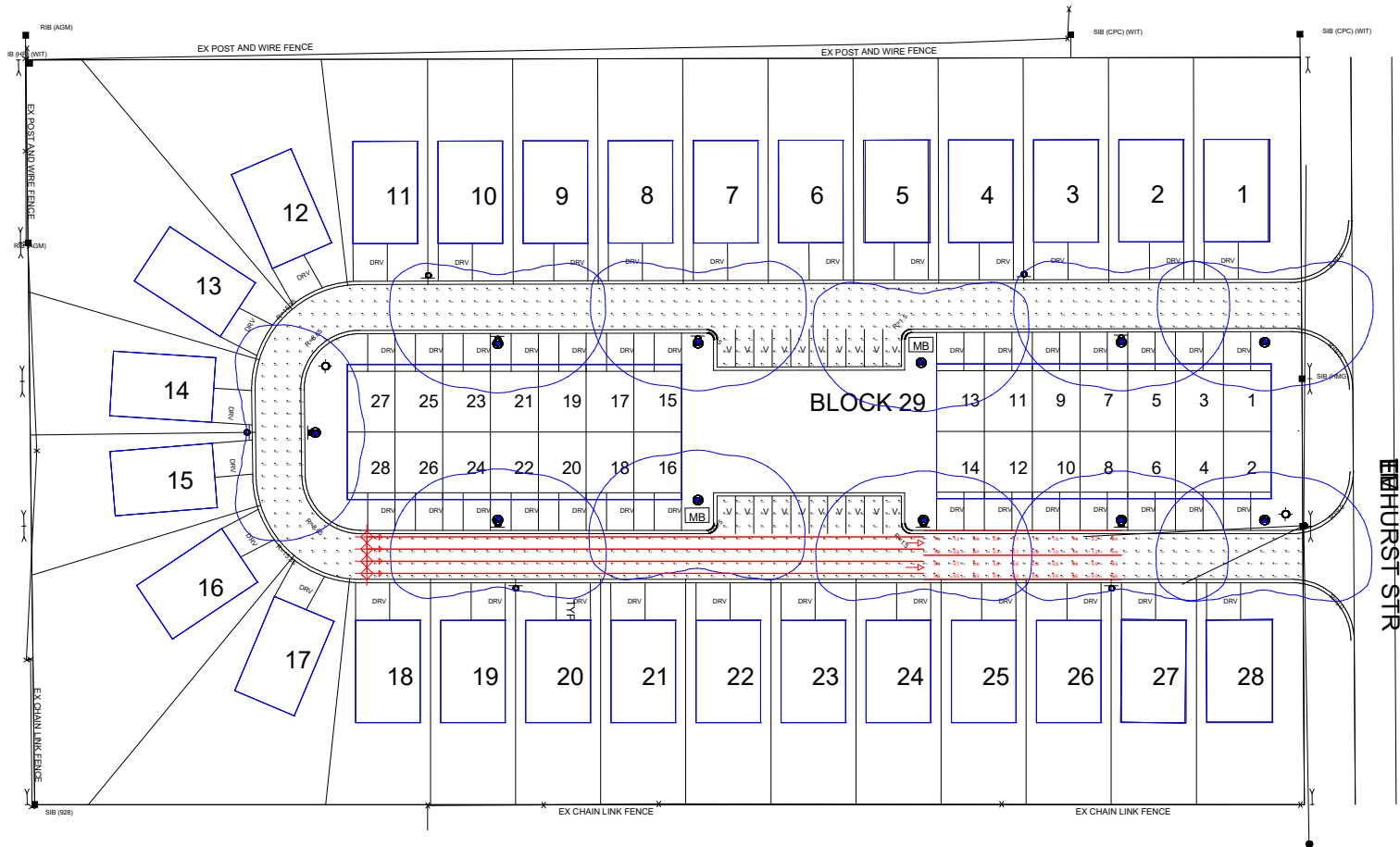
Units:

Page 1 of 11

DISCLAIMER: Calculations have been performed according to IESNA & CIE standards and good practice. Some differences between measured values and calculated results may occur due to tolerances in calculation methods, testing procedures, component performance, measurement techniques and field conditions such as voltage and temperature variations. Input data used to generate the attached calculations such as room dimensions, reflectances, furniture and architectural elements significantly affect the lighting calculations. If the real environment conditions do not match the input data, differences will occur between measured values and calculated values.

# Amber-Lee Lighting

| Luminaire Schedule |     |       |   |             |            |       |          |                   |
|--------------------|-----|-------|---|-------------|------------|-------|----------|-------------------|
| Symbol             | Qty | Label | Description                             | Lum. Lumens | Lum. Watts | LLF   | Filename | Arrangement       |
| ●                  | 11  | B     | SRA400H-L3-70LEDL3 0-s tilt 10deg optic | 8755        | 70         | 0.850 |          | SINGLE TILT 10DEG |



| Calculation Summary         |                      |         |       |      |      |         |         |                         |          |        |                |
|-----------------------------|----------------------|---------|-------|------|------|---------|---------|-------------------------|----------|--------|----------------|
| Label                       | CalcType             | Units   | Avg   | Max  | Min  | Avg/Min | Max/Min | Roadway Standard        | LV Ratio | RTable | Actual C Value |
| CalcPts 1                   | Illuminance          | Lux     | 13.05 | 53.1 | 1.3  | 10.04   | 40.85   | N.A.                    | N.A.     | N.A.   | N.A.           |
| Road 1 Illum                | Illuminance          | Lux     | 16.77 | 61.0 | 6.6  | 2.54    | 9.24    | ANSHIES RP-8-18 Roadway | N.A.     | N.A.   | N.A.           |
| Road 1 Luminance            | Luminance            | Cd/Sq.m | 0.94  | 2.4  | 0.5  | 1.88    | 4.80    | ANSHIES RP-8-18 Roadway | N.A.     | R3     | 0.07           |
| Road 1 Veil Lum             | Veiling Luminance    | Cd/Sq.m | 0.12  | 0.4  | 0.0  | N.A.    | N.A.    | ANSHIES RP-8-18 Roadway | 0.43     | R3     | 0.07           |
| Road 1 Vis Level            | Visibility Level     | N.A.    | N.A.  | N.A. | N.A. | N.A.    | N.A.    | ANSHIES RP-8-18 Roadway | N.A.     | R3     | 0.07           |
| Road 1 Vis Level Bkgd Lum   | Background Luminance | Cd/Sq.m | 1.08  | 2.4  | 0.5  | 2.16    | 4.80    | ANSHIES RP-8-18 Roadway | N.A.     | R3     | 0.07           |
| Road 1 Vis Level Target Lum | Target Luminance     | Cd/Sq.m | 1.65  | 5.2  | 0.3  | 5.50    | 17.33   | ANSHIES RP-8-18 Roadway | N.A.     | R3     | 0.07           |

Amber-Lee Lighting Sales, 95 Shavian Blvd. London, Ontario, N6G 2P4 (519) 860-0505  
 sales@Amber-LeeLighting.com www.amber-leelighting.com

Project name : Elmhurst - Street Lighting - Kilworth

Date: 7/8/2021

Prepared for: David Metcalfe

AGi32® Version 19.15.2

Filename: Elmhurst - Street Lighting - Kilworth.AGI

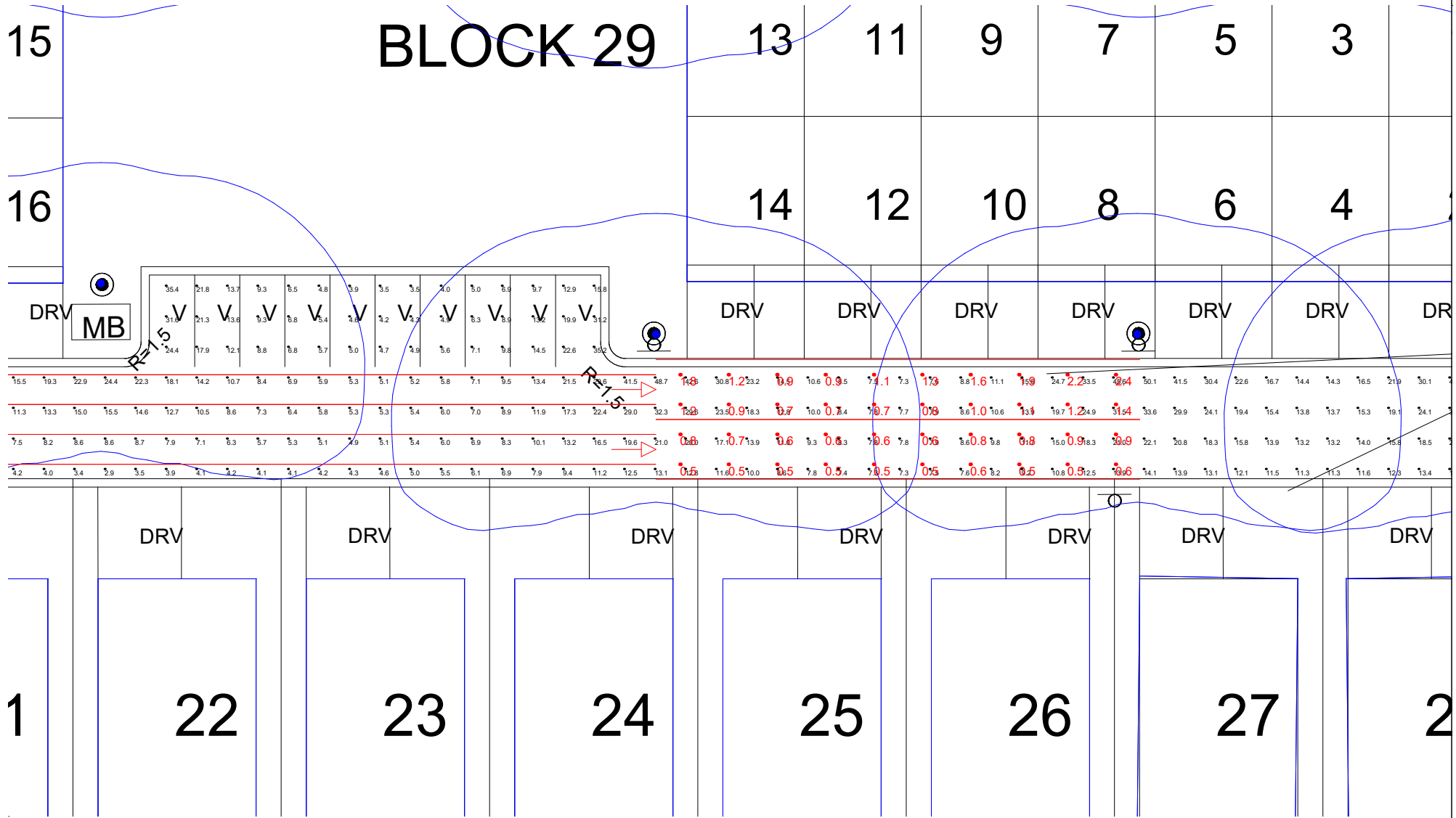
Total Time (Hrs.): 1.03

By : Anne Côté

Units:

Page 2 of 11

DISCLAIMER: Calculations have been performed according to IESNA & CIE standards and good practice. Some differences between measured values and calculated results may occur due to tolerances in calculation methods, testing procedures, component performance, measurement techniques and field conditions such as voltage and temperature variations. Input data used to generate the attached calculations such as room dimensions, reflectances, furniture and architectural elements significantly affect the lighting calculations. If the real environment conditions do not match the input data, differences will occur between measured values and calculated values.



Amber-Lee Lighting Sales, 95 Shavian Blvd. London, Ontario, N6G 2P4 (519) 860-0505  
 sales@Amber-LeeLighting.com www.amber-leelighting.com

Project name : Elmhurst - Street Lighting - Kilworth

Date: 7/8/2021

Prepared for: David Metcalfe

AGI32® Version 19.15.2

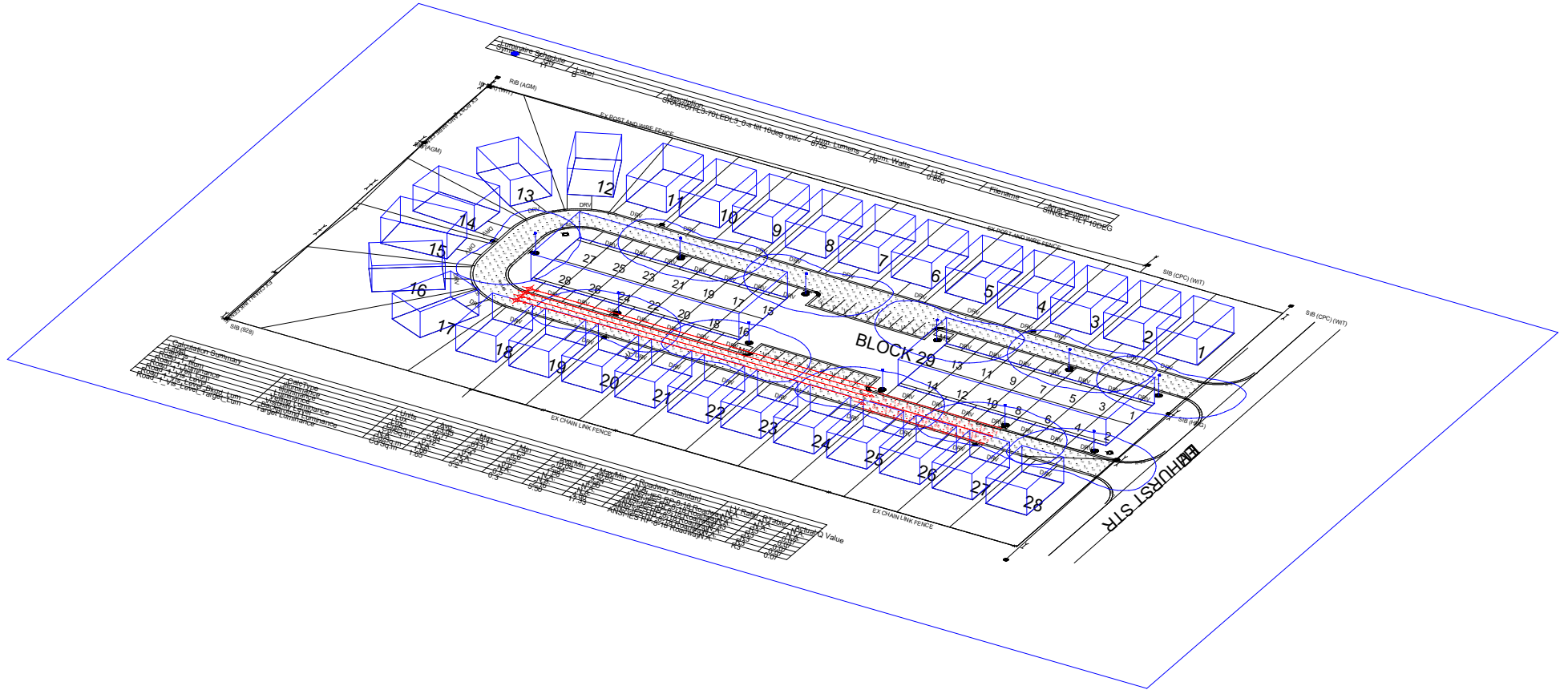
Filename: Elmhurst - Street Lighting - Kilworth.AGI

Total Time (Hrs.): 1.03

By : Anne Côté

Units:

DISCLAIMER: Calculations have been performed according to IESNA & CIE standards and good practice. Some differences between measured values and calculated results may occur due to tolerances in calculation methods, testing procedures, component performance, measurement techniques and field conditions such as voltage and temperature variations. Input data used to generate the attached calculations such as room dimensions, reflectances, furniture and architectural elements significantly affect the lighting calculations. If the real environment conditions do not match the input data, differences will occur between measured values and calculated values.



## Results summary

| Luminaire Schedule |     |       |   |             |            |       |                              |                   |  |
|--------------------|-----|-------|---|-------------|------------|-------|------------------------------|-------------------|--|
| Symbol             | Qty | Label | Description                             | Lum. Lumens | Lum. Watts | LLF   | Filename                     | Arrangement       |  |
| ●                  | 11  | B     | SRA400H-L3-70LEDL3_0-s tilt 10deg optic | 8755        | 70         | 0.850 | SRA400H-L3-70LEDL3.0 (S).ies | SINGLE TILT 10DEG |  |

| Calculation Summary         |                  |         |       |      |         |         |                          |         |        |         |
|-----------------------------|------------------|---------|-------|------|---------|---------|--------------------------|---------|--------|---------|
| Label                       | CalcType         | Units   | Avg   | Min  | Avg/Min | Max/Min | Roadway Standard         | LVRatio | RTable | ActQVal |
| CalcPts_1                   | Illuminance      | Lux     | 13.05 | 1.3  | 10.04   | 40.85   | N.A.                     | N.A.    | N.A.   | N.A.    |
| Road_1_Illum                | Illuminance      | Lux     | 16.77 | 6.6  | 2.54    | 9.24    | ANSI-IES RP-8-18 Roadway | N.A.    | N.A.   | N.A.    |
| Road_1_Luminance            | Luminance        | Cd/Sq.m | 0.94  | 0.5  | 1.88    | 4.80    | ANSI-IES RP-8-18 Roadway | N.A.    | R3     | 0.07    |
| Road_1_Veil_Lum             | Veiling Luminanc | Cd/Sq.m | 0.12  | 0.0  | N.A.    | N.A.    | ANSI-IES RP-8-18 Roadway | 0.43    | R3     | 0.07    |
| Road_1_Vis_Level            | Visibility Level | N.A.    | N.A.  | N.A. | N.A.    | N.A.    | ANSI-IES RP-8-18 Roadway | N.A.    | R3     | 0.07    |
| Road_1_Vis_Level_Bkgd_Lum   | Background Lumin | Cd/Sq.m | 1.08  | 0.5  | 2.16    | 4.80    | ANSI-IES RP-8-18 Roadway | N.A.    | R3     | 0.07    |
| Road_1_Vis_Level_Target_Lum | Target Luminance | Cd/Sq.m | 1.65  | 0.3  | 5.50    | 17.33   | ANSI-IES RP-8-18 Roadway | N.A.    | R3     | 0.07    |

Amber-Lee Lighting Sales, 95 Shavian Blvd. London, Ontario, N6G 2P4 (519) 860-0505  
 sales@Amber-LeeLighting.com www.amber-leelighting.com

Project name : Elmhurst - Street Lighting - Kilworth

Date: 7/8/2021

Prepared for: David Metcalfe

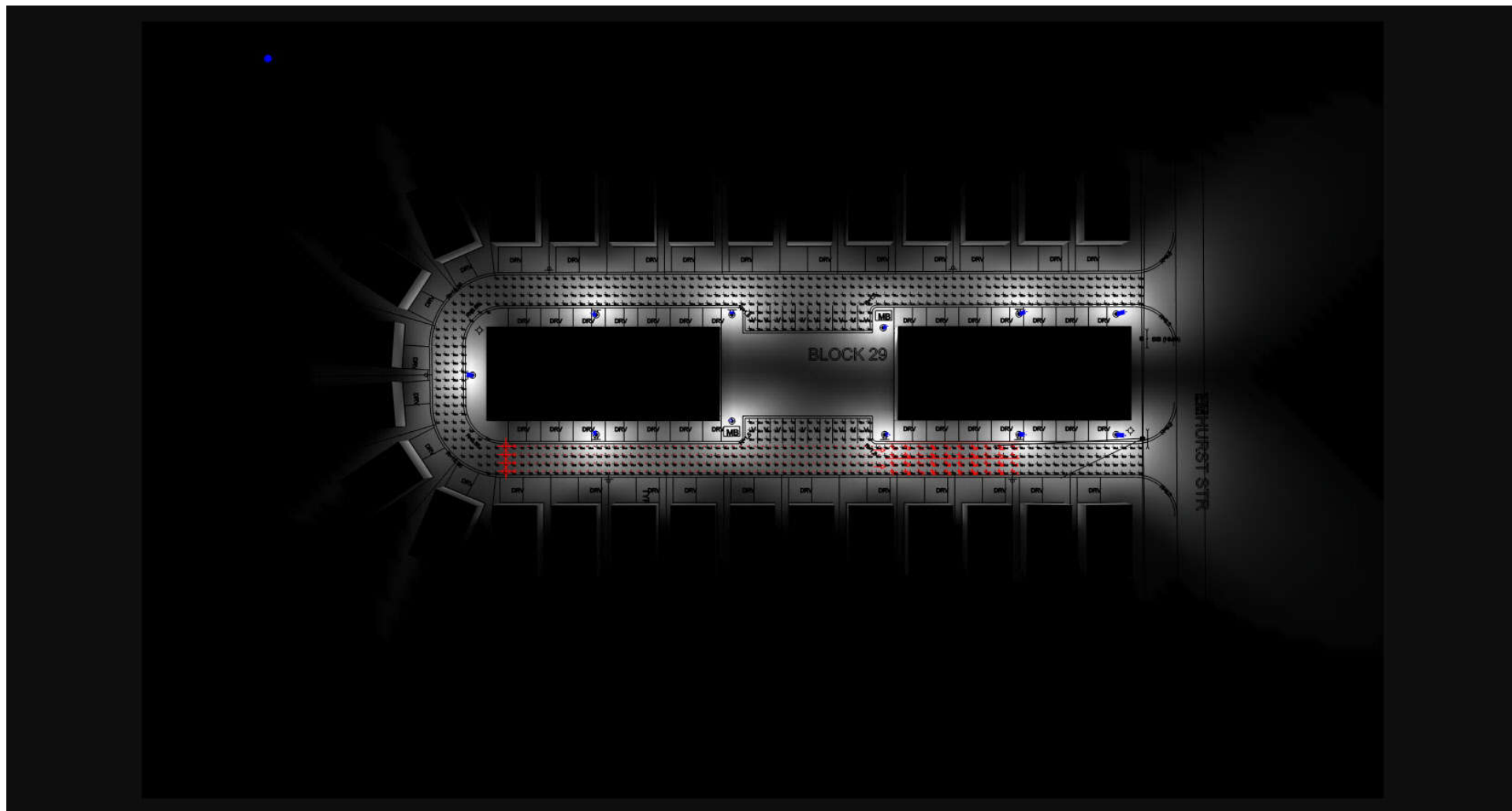
AGi32® Version 19.15.2

Filename: Elmhurst - Street Lighting - Kilworth.AGI

Total Time (Hrs.): 1.03

By : Anne Côté

Units:



Amber-Lee Lighting Sales, 95 Shavian Blvd. London, Ontario, N6G 2P4 (519) 860-0505  
 sales@Amber-LeeLighting.com www.amber-leelighting.com

DISCLAIMER: Calculations have been performed according to IESNA & CIE standards and good practice. Some differences between measured values and calculated results may occur due to tolerances in calculation methods, testing procedures, component performance, measurement techniques and field conditions such as voltage and temperature variations. Input data used to generate the attached calculations such as room dimensions, reflectances, furniture and architectural elements significantly affect the lighting calculations. If the real environment conditions do not match the input data, differences will occur between measured values and calculated values.

Project name : Elmhurst - Street Lighting - Kilworth

Prepared for: David Metcalfe

Filename: Elmhurst - Street Lighting - Kilworth.AGI

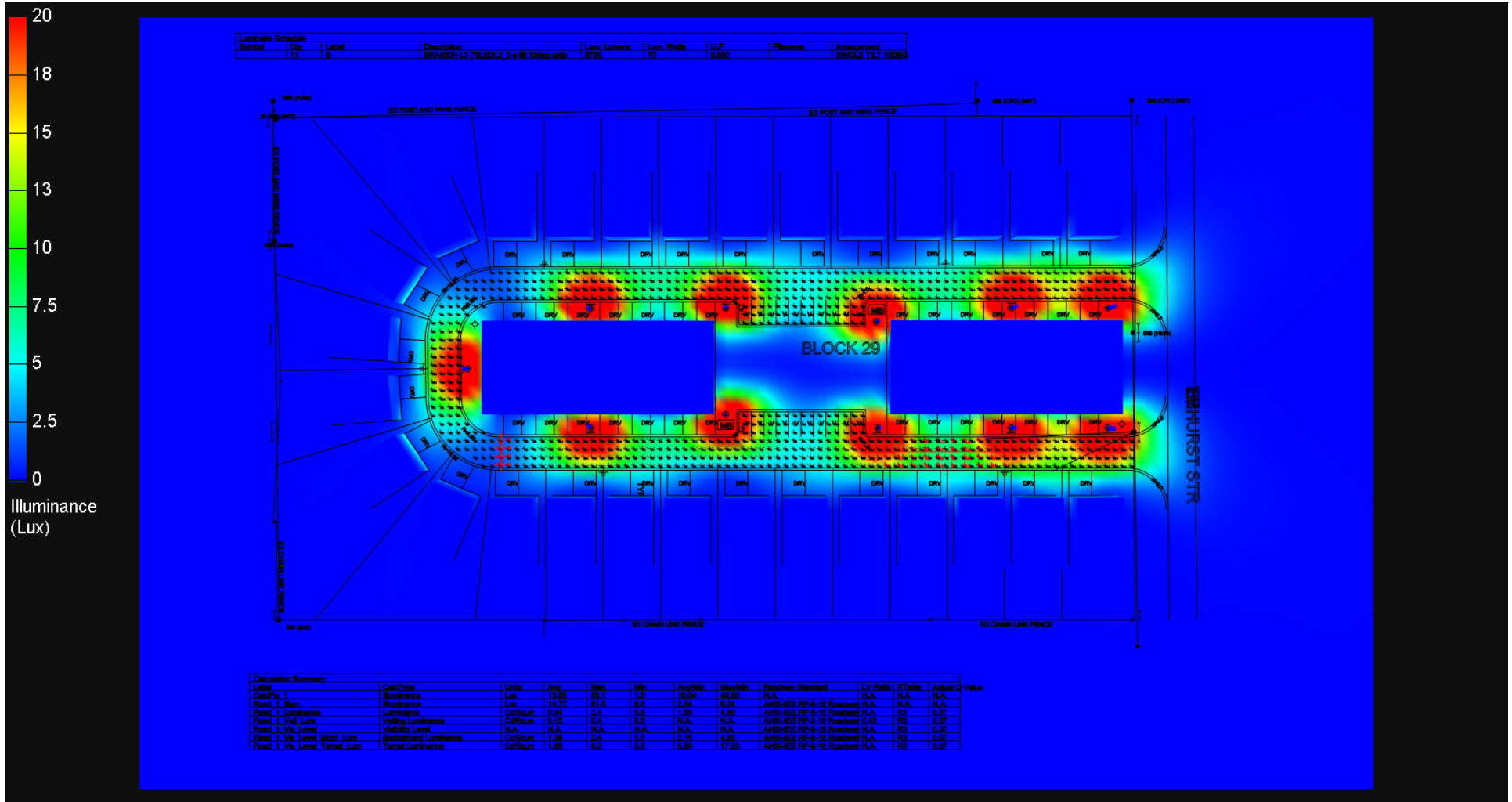
By : Anne Côté

Units:

Date: 7/8/2021

AGi32® Version 19.15.2

Total Time (Hrs.): 1.03



Amber-Lee Lighting Sales, 95 Shavian Blvd. London, Ontario, N6G 2P4 (519) 860-0505  
 sales@Amber-LeeLighting.com www.amber-leelighting.com

DISCLAIMER: Calculations have been performed according to IESNA & CIE standards and good practice. Some differences between measured values and calculated results may occur due to tolerances in calculation methods, testing procedures, component performance, measurement techniques and field conditions such as voltage and temperature variations. Input data used to generate the attached calculations such as room dimensions, reflectances, furniture and architectural elements significantly affect the lighting calculations. If the real environment conditions do not match the input data, differences will occur between measured values and calculated values.

Project name : Elmhurst - Street Lighting - Kilworth

Prepared for: David Metcalfe

Filename: Elmhurst - Street Lighting - Kilworth.AGI

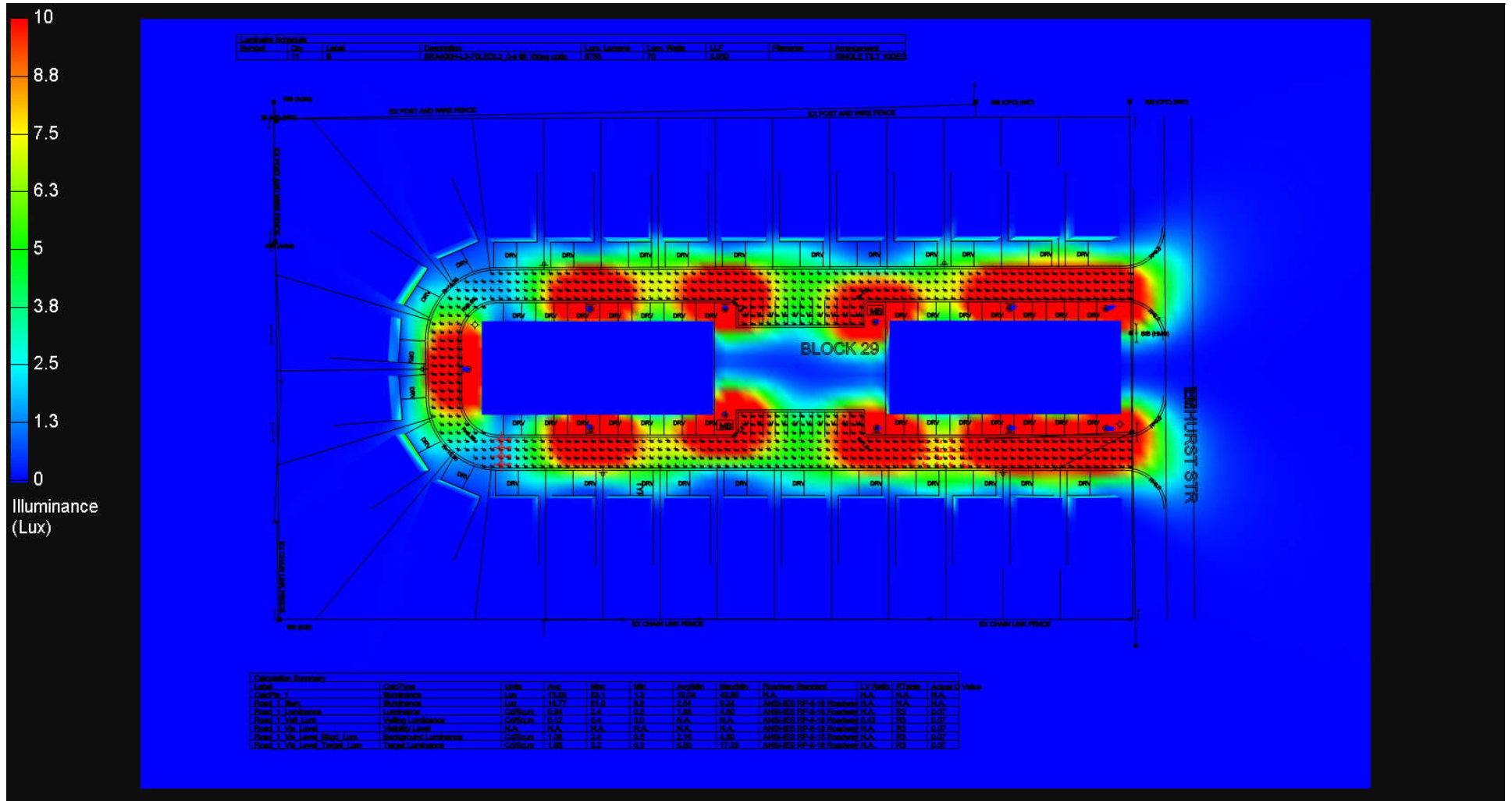
By : Anne Côté

Units:

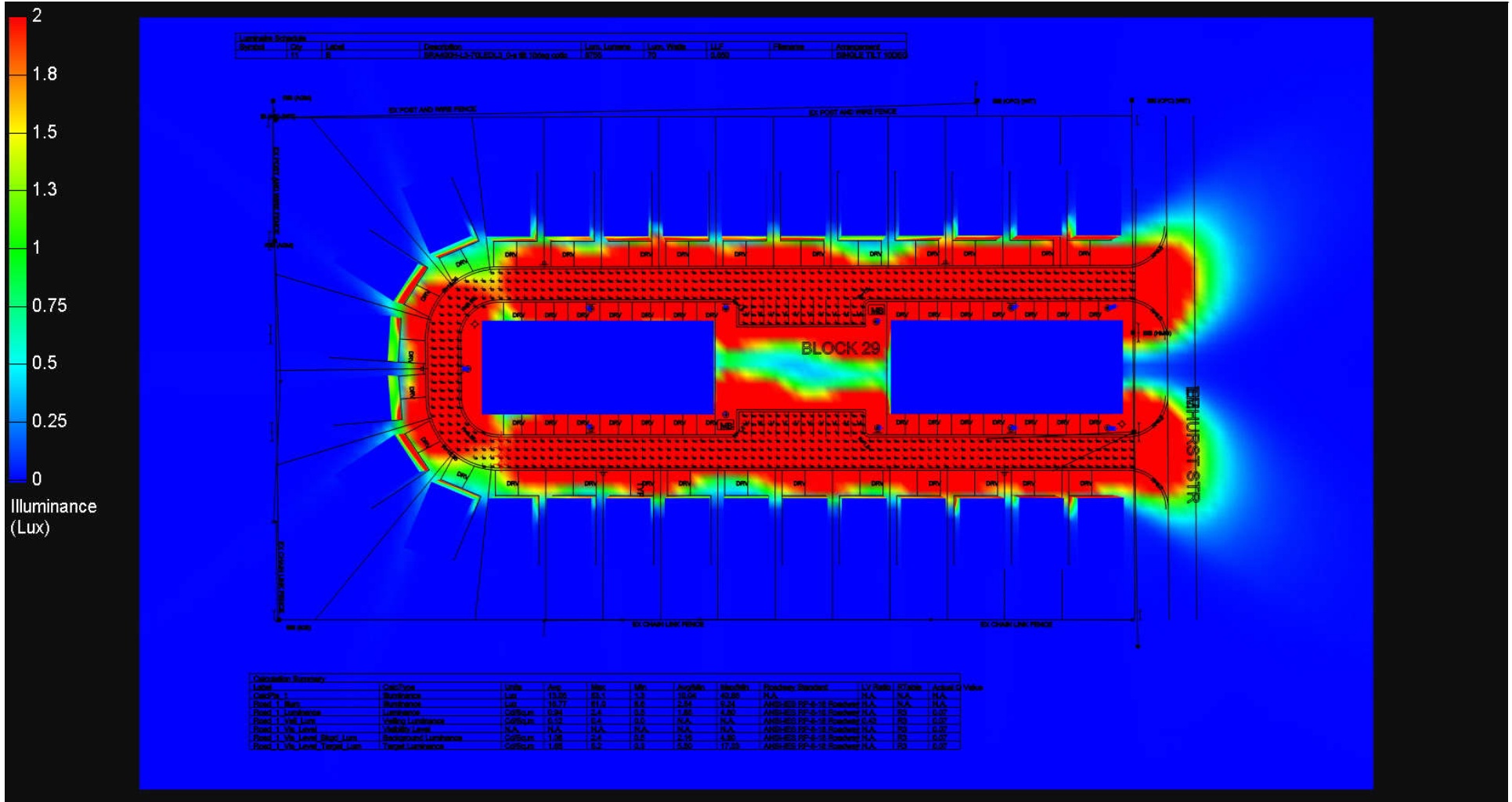
Date: 7/8/2021

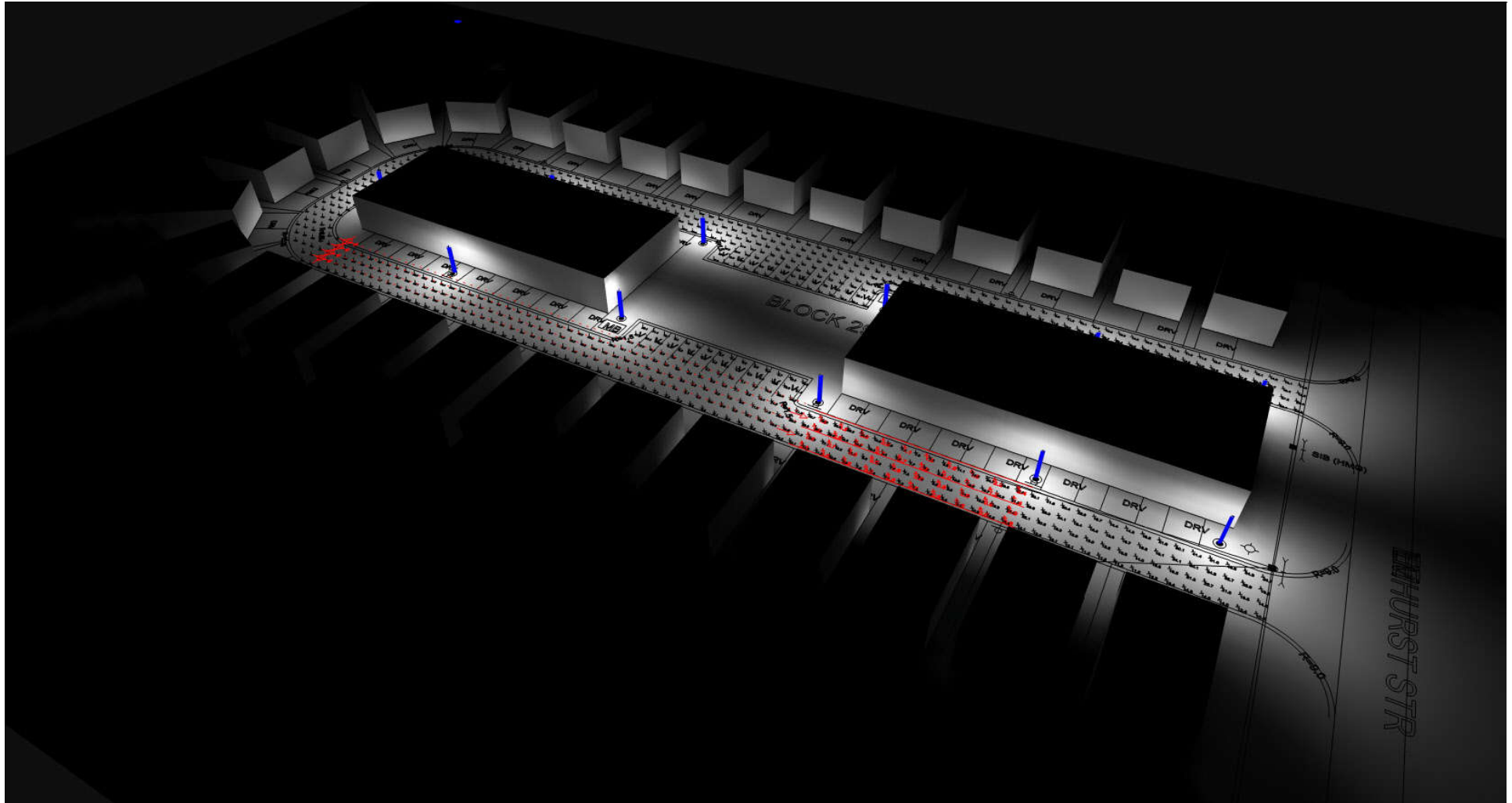
AGI32® Version 19.15.2

Total Time (Hrs.): 1.03









Amber-Lee Lighting Sales, 95 Shavian Blvd. London, Ontario, N6G 2P4 (519) 860-0505  
 sales@Amber-LeeLighting.com www.amber-leelighting.com

DISCLAIMER: Calculations have been performed according to IESNA & CIE standards and good practice. Some differences between measured values and calculated results may occur due to tolerances in calculation methods, testing procedures, component performance, measurement techniques and field conditions such as voltage and temperature variations. Input data used to generate the attached calculations such as room dimensions, reflectances, furniture and architectural elements significantly affect the lighting calculations. If the real environment conditions do not match the input data, differences will occur between measured values and calculated values.

Project name : Elmhurst - Street Lighting - Kilworth

Prepared for: David Metcalfe

Filename: Elmhurst - Street Lighting - Kilworth.AGI

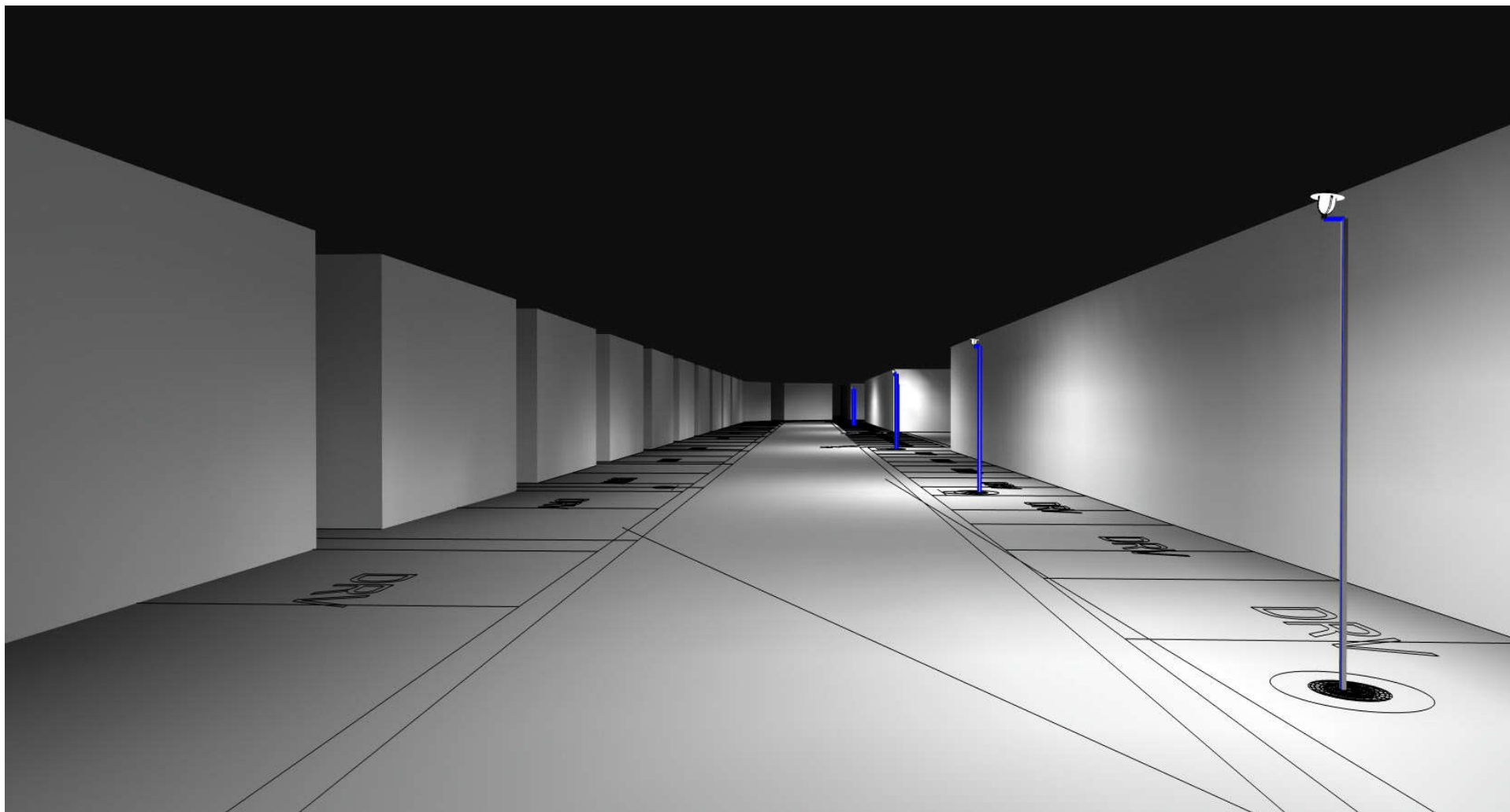
By : Anne Côté

Units:

Date: 7/8/2021

AGI32® Version 19.15.2

Total Time (Hrs.): 1.03



Amber-Lee Lighting Sales, 95 Shavian Blvd. London, Ontario, N6G 2P4 (519) 860-0505  
 sales@Amber-LeeLighting.com www.amber-leelighting.com

DISCLAIMER: Calculations have been performed according to IESNA & CIE standards and good practice. Some differences between measured values and calculated results may occur due to tolerances in calculation methods, testing procedures, component performance, measurement techniques and field conditions such as voltage and temperature variations. Input data used to generate the attached calculations such as room dimensions, reflectances, furniture and architectural elements significantly affect the lighting calculations. If the real environment conditions do not match the input data, differences will occur between measured values and calculated values.

**Project name :** Elmhurst - Street Lighting - Kilworth

**Prepared for:** David Metcalfe

**Filename:** Elmhurst - Street Lighting - Kilworth.AGI

**By :** Anne Côté

**Units:**

**Date:** 7/8/2021

AGI32® Version 19.15.2

Total Time (Hrs.): 1.03