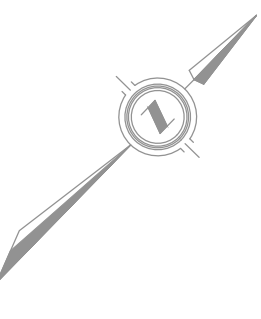


GLENDON DRIVE



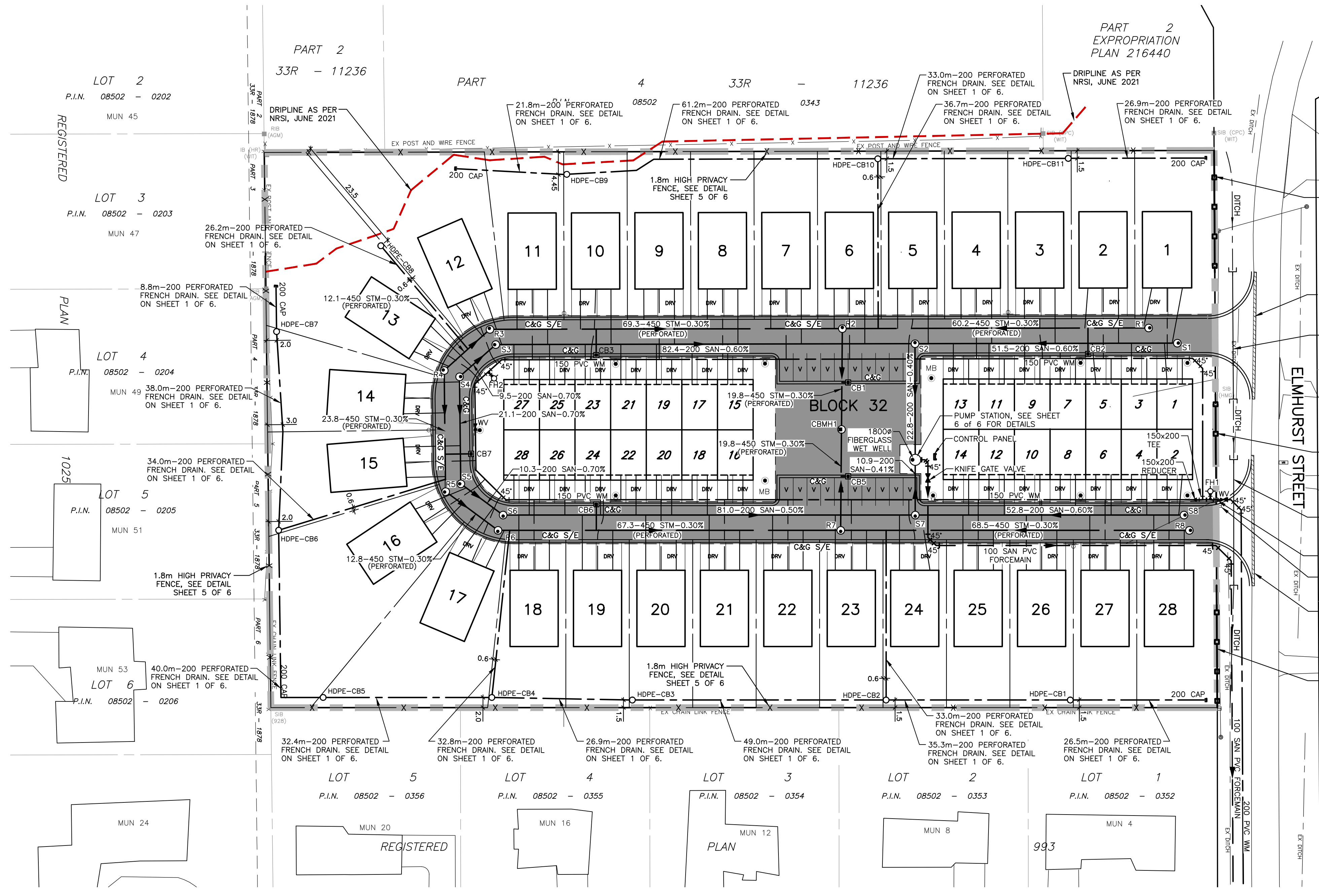
LEGEND:

- CB PROPOSED CATCHBASIN
- EX. MANHOLE
- CB PROPOSED CATCHBASIN
- C/CB PROPOSED CURB INLET CATCHBASIN
- D/CB PROPOSED DITCH INLET CATCHBASIN
- HDPE-CB PROPOSED 450mm HDPE OPEN BOTTOM CATCH BASIN BY DEVRON (OR APPROVED EQUAL)
- CBMH PROPOSED CATCHBASIN MANHOLE
- EX. CATCHBASIN
- DEVELOPMENT BOUNDARY
- EX. STORM SEWER
- PROPOSED STORM SEWER
- 200# PERFORATED HDPE PIPE (EX. SANITARY SEWER)
- PROPOSED SANITARY SEWER
- EX. WATERMAIN
- PROPOSED WATERMAIN
- WV PROPOSED WATER VALVE
- ◆ FIRE HYDRANT
- ◆ EX. FIRE HYDRANT
- ◆ PROPOSED LIGHT STANDARD SEE DETAIL SHEET 5 OF 6
- 59 PROPOSED UNIT NUMBERS
- S/E DENOTES SUPER-ELEVATED OPSD-600.100 CURB & GUTTER.
- STORMWATER INFILTRATION GALLERY

CURB NOTES:
ALL CURB & GUTTER WITHIN THE DEVELOPMENT TO BE OPSD-600.100 STANDARD PROFILE UNLESS NOTED OTHERWISE.
100mm SUBDRAINS TO BE INSTALLED UNDER ALL LOW SIDE CURBS

ASPHALT REMOVALS NOTE:
EXISTING ASPHALT TO BE SAWCUT AND MILLED (50mm DEEP X 0.5m WIDE LAP JOINT). ALL REMOVED MATERIAL TO BE DISPOSED OF OFF SITE.

NOTE:
MEDIUM DENSITY BUILDING (BLOCK 32) CONSTRUCTION MUST ADHERE TO BUILDING CLASSIFICATION OF 16, CONFORMING TO ARTICLE 3.1.4.6 OF THE ONTARIO BUILDING CODE.

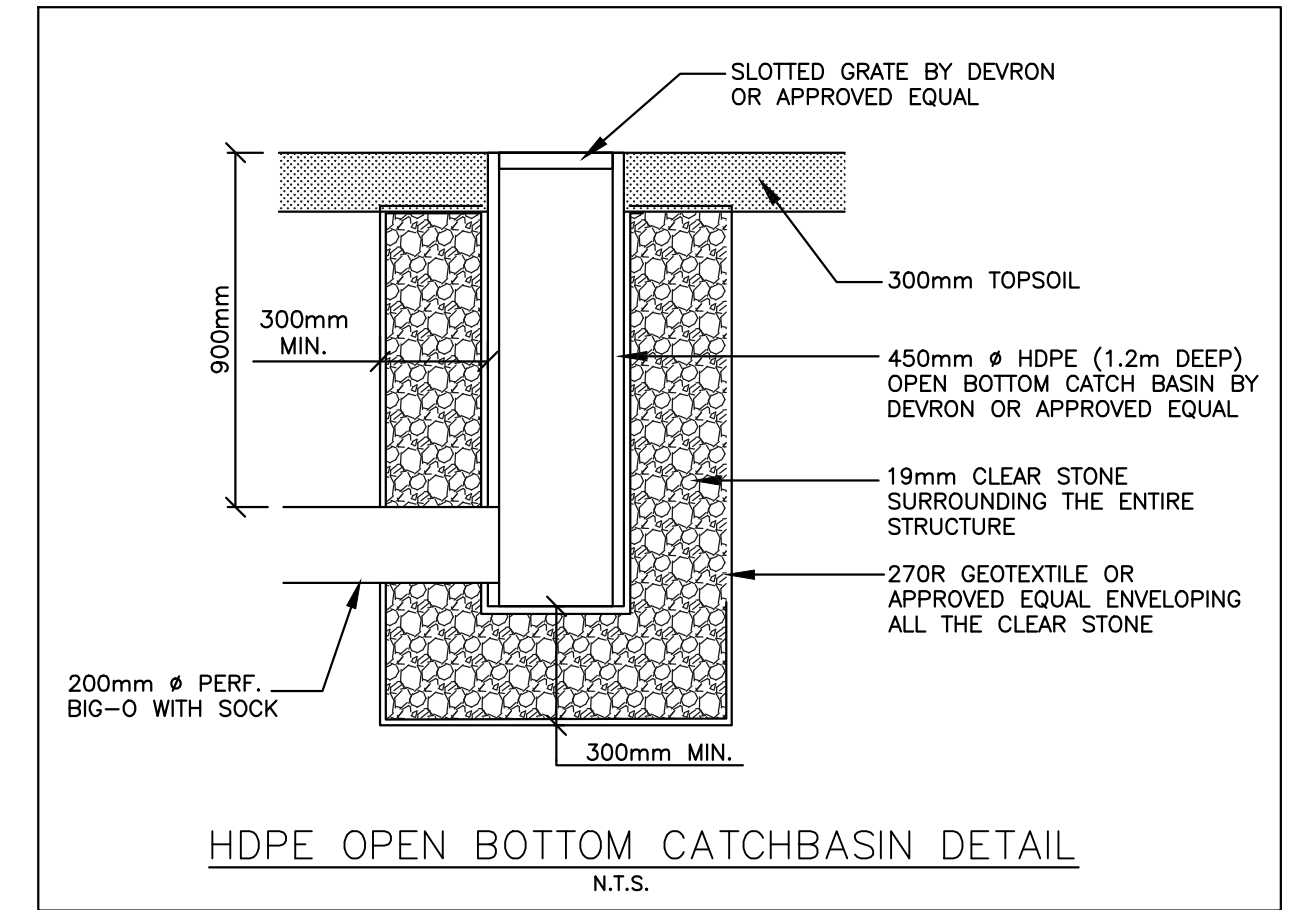
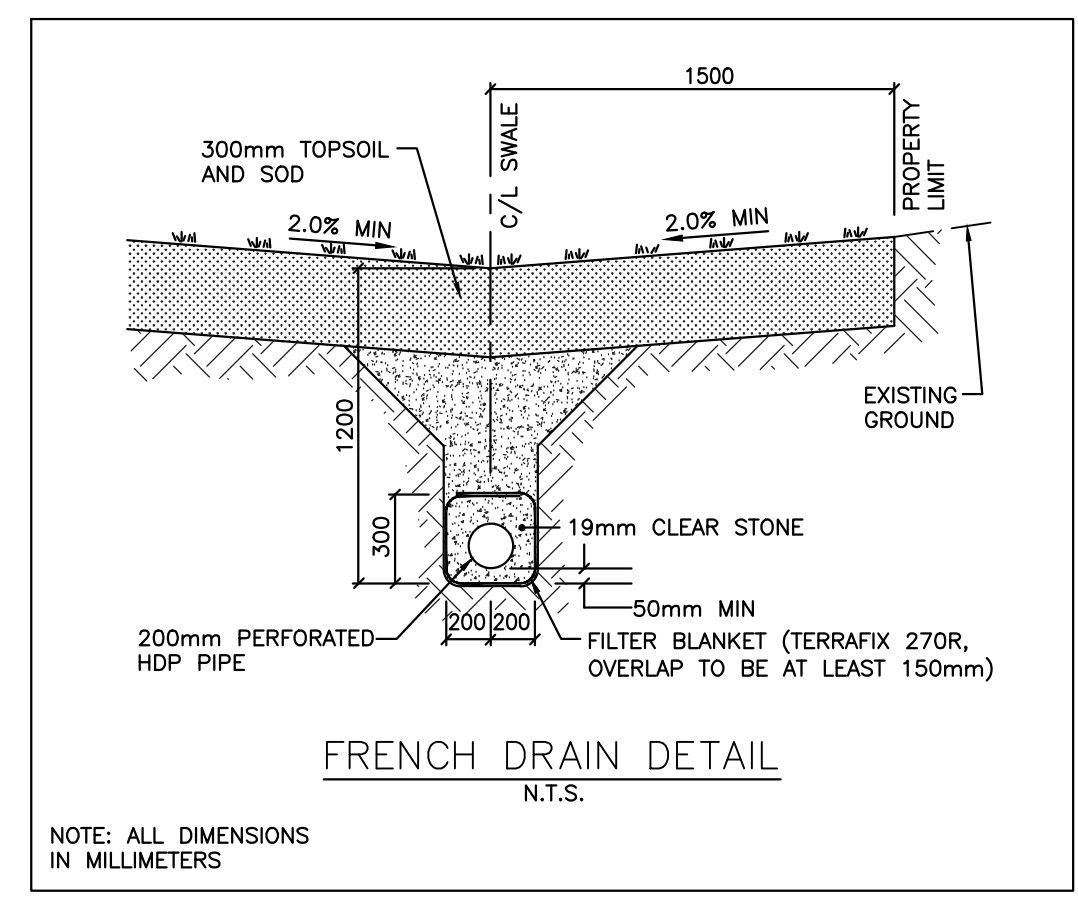


SANITARY MH DATA

MH #	INVERT LOCATION	INVERT ELEV.	LID ELEV.	DIAMETER
S1	WEST	237.17	241.19	1200mm
S2	EAST	236.86	241.19	1200mm
	WEST	236.86		
	SOUTH	236.81		
S3	SOUTH	237.35	241.42	1200mm
	EAST	237.32		
S4	NORTH	237.41	241.48	1200mm
	SOUTH	237.41		
S5	NORTH	237.28	241.44	1200mm
	EAST	237.25		
S6	WEST	237.19	241.36	1200mm
	EAST	237.16		
S7	WEST	236.79	241.15	1200mm
	EAST	236.79		
	NORTH	236.74		
S8	WEST	237.11	240.85	1200mm
PS	NORTH	236.70	241.30	1200mm
	SOUTH	236.70		

STORM MH DATA

MH #	INVERT LOCATION	INVERT ELEV.	LID ELEV.	DIAMETER
R1	WEST	238.44	241.31	1200mm
R2	EAST	238.26	241.18	1200mm
	WEST	238.26		
	SOUTH	238.26		
R3	SOUTH	238.47	241.49	1200mm
	EAST	238.47		
R4	NORTH	238.50	241.55	1200mm
	SOUTH	238.57		
R5	NORTH	238.50	241.51	1200mm
	EAST	238.50		
R6	WEST	238.46	241.43	1200mm
	EAST	238.46		
R7	WEST	238.26	241.14	1200mm
	EAST	238.26		
	NORTH	238.26		
R8	WEST	238.46	240.88	1200mm
CBMH1	NORTH	238.20	240.60	1200mm
	SOUTH	238.20		



EXISTING SERVICES	DRAWING #, SOURCE	DATE	CONSTRUCTED SERVICES	COMPLETION	DETAILS	No.	REVISIONS	DATE	CONSULTANT	CONSULTANT OR DIVISION	ENGINEER'S STAMP	SCALE	TITLE	PROJECT No.
					DESIGN	SB	1	DRIPLINE SURVEY	JULY 2021	LDS		<p>HORIZ - 1 : 500</p>	<p>ELMHURST STREET, KILWORTH</p> <p>SWEID HOLDING INC.</p> <p>SERVICING PLAN</p>	<p>LD-00203</p> <p>SHEET No.</p> <p>1 of 6</p> <p>PLAN FILE No.</p>
					DRAWN BY	SB								
					CHECKED	AH								
					APPROVED	AG								
					DATE			2021-07-14						
00203-Servicing.dwg														



Z:\1614-00203 - ELMHURST - KILWORTH - DESIGN\ROAD\CONAD\SHEET FILES\00203-SERVICING.DWG
2021-07-15 10:27:27 AM BY: SWEID/HANAS